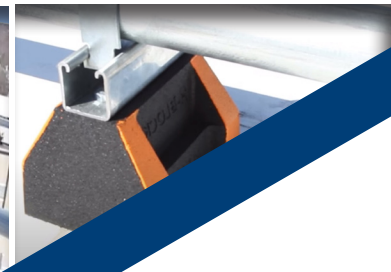


September 2021 | No. 5

**H-Block® Rooftop Support Systems**

# Engineering Catalog



**HAYDON®**

*Get Strut Done.*

1-800-242-9366

**HAYDONCORP.COM**

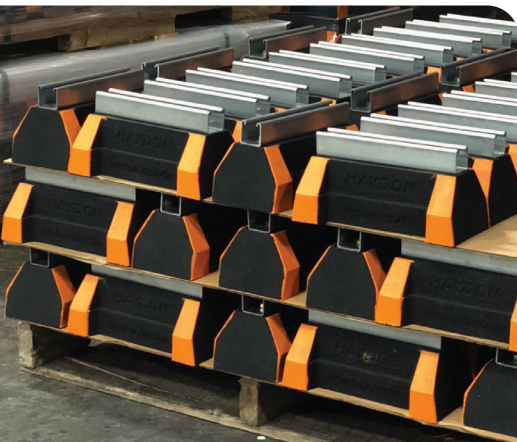
Wayne, NJ • Grand Prairie, TX • Stockton, CA

# THE HAYDON DIFFERENCE

## A nationwide leader. A personal approach.

At Haydon, it's our mission to deliver the highest quality metal framing systems with the power and resources of a coast-to-coast leader, and the flexible, personalized service of a local supplier.

- A rigorous quality system guarantees ability to exceed industry tolerances
- Raw Materials Inspection
- In-line quality checks
- Routine destructive testing
- Routine materials supplier assessments
- Cleanest channel in the framing industry
- Shrink-wrapped painted strut bundles
- Oil-free strut bundles
- UL Listed Electrical Products
  - › Channel Raceway
  - › Channel Raceway Fittings
  - › Channel Raceway Base
  - › Channel Raceway Closure Strip
- LEED CERTIFIABLE
- Buy American Act Compliant
- American Reinvestment Recovery Act Compliant (A.R.R.A)
- American Iron & Steel (AIS) Compliant



## Celebrated customer service and access

Customers tell us we go the extra mile and we pride ourselves on exceeding their expectations. Our staff is courteous and knowledgeable and with our fast response times we can provide quotes in a matter of hours. Our customers have access to anyone in the company, including key decision makers, when it's needed. Customer service is the heart and soul of our business and we build long-term partnerships with our customers by offering a consistent quality and reliability of product, service and delivery.

## Complete material traceability

We're transparent in everything we do. Our customers have access to testing records, ASTM certifications, and a complete history of our products and parts. Each step in the process can be traced, including the steel's origin and material specifications.

## Convenient and clean packaging

Our products and components are packaged in a way that's convenient and prevents shipping damage. Painted channel is wrapped in a protective cover to avoid scratches. All of our strut bundles are shrink-wrapped for ease of delivery and to keep warehouses and job sites free of tramp oil. Assembled components are packed together with smaller components to avoid errors during assembly.

## Located nationwide for faster delivery times

With locations in New Jersey, Texas, and now California, we are the only coast-to-coast strut manufacturer. We routinely ship and deliver with the shortest lead times in the industry. We'll even right-size the delivery vehicle to meet customer and job site requirements.





## WHY HAYDON? SIXTY YEARS OF DOING IT BETTER.

At Haydon, we deliver the highest-quality metal framing and baseboard systems with the power and reach of a national leader and the flexible, personalized approach of a local supplier. Over more than half a century, Haydon has grown to become a national leader in our industry, and we know what it takes for each project to succeed. With our knowledgeable, supportive staff and strategically located manufacturing facilities, we're able to deliver innovative, customized solutions all across North America.

Our tradition of excellence is founded on our commitment to our coworkers and customers, and a dedication to our shared success. This people-first culture is at the core of who we are and how we do business. We treat all of our customers' projects and deadlines as if they were our own, going that extra step to ensure all orders are fulfilled on spec and on time.

### PROUD MEMBER OF:



National Electrical Manufacturers  
Representatives Association



Local 210 International  
Brotherhood of Teamsters  
All products are Union made.

From the first call to the last sign-off, our staff is there to help guide each order to successful completion.

With manufacturing facilities in New Jersey, Texas, and California, we routinely ship and deliver with the shortest lead times in the industry. All of our products have complete traceability, including testing records, ASTM certifications, and origin of materials. And most importantly, all orders are delivered in a safe, convenient, secure way.

We're more than just a supplier. We're a partner. And as we continue to grow and evolve toward an even more successful future, our job will always be to help everyone—our customers, coworkers, and vendors—to succeed.

**1-800-242-9366**  
**HAYDONCORP.COM**

# H-BLOCK® COMPETITIVE ADVANTAGES

- ▶ Made from 100% post-consumer products
- ▶ LEEDs Certifiable
- ▶ Meets the Buy American Act
- ▶ Complies with the American Reinvestment Recovery Act (A.R.R.A.)
- ▶ Independent Laboratory Tested
- ▶ Resistance to Freeze and Thaw
- ▶ UV Resistant
- ▶ No Deteriorations
- ▶ All 4 Corners coated with high visibility safety ANSI orange #2535.1-1998
- ▶ Dampens Vibrations
- ▶ Compatible with most rooftop materials and environments



H-strut channel for H-Block support assemblies includes a variety of options to fit any application:

- ▶ Custom cut lengths - longer and shorter
- ▶ Finishes and alloys
  - ▶ Plain steel
  - ▶ Pre-galvanized
  - ▶ Hot Dipped Galvanized
  - ▶ Aluminum
  - ▶ Stainless Steel 304 & 316L
  - ▶ PVC coated
  - ▶ Powder-coated Supr-Green
  - ▶ Powder-coated gray
  - ▶ Powder-coated white
  - ▶ Powder-coated black
  - ▶ Zinc Trivalent Chromium

Designed to support all of the following applications:

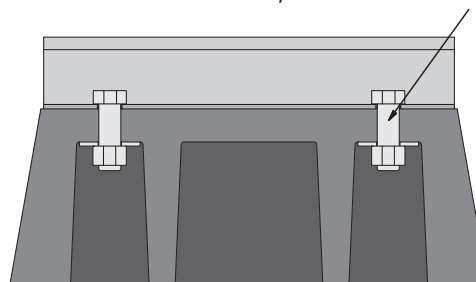
- ▶ Solar racking
- ▶ Pipe & conduit
- ▶ Single pipe
- ▶ Duct work
- ▶ HVAC systems
- ▶ Cable tray systems
- ▶ Roof walkways
- ▶ Inclined condensing grids



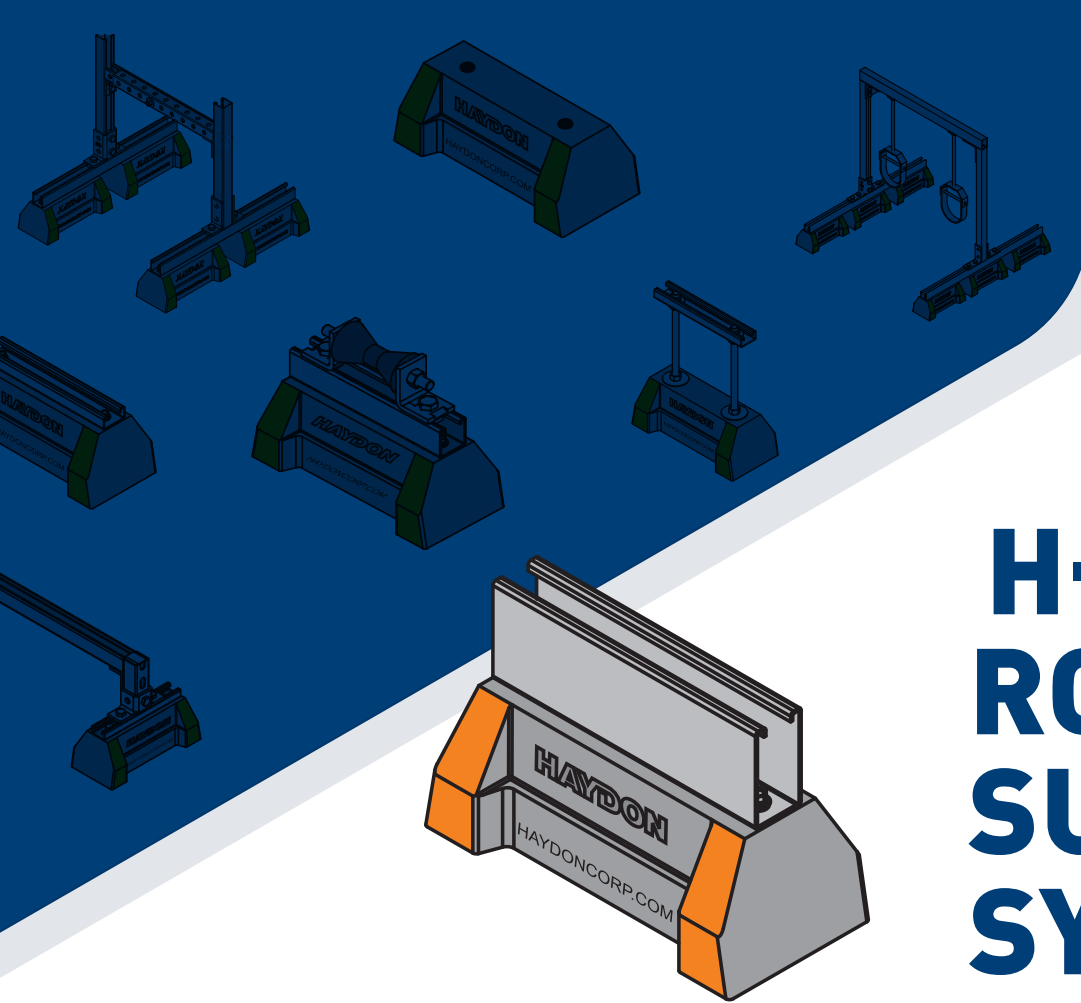
Rooftop supports come pre-assembled in customizable kits on pallets



All Haydon H-BLOCK products made with 1 $\frac{5}{8}$  and higher channel are equipped with (2)  $\frac{1}{2}$  x 1  $\frac{1}{2}$  hex head cap screws, washers and nuts.







# H-BLOCK ROOFTOP SUPPORT SYSTEMS

## SPECIFICATIONS

### MATERIAL

H-STRUT channels are produced from prime structural steel covered by the following specifications.

- ▶ Pre-Galvanized Steel.....ASTM A-653-SS33
- ▶ Plain Steel.....ASTM A-1011-04SS33
- ▶ Aluminum (Type 6063T6).....ASTM B-221
- ▶ Stainless Steel (Type 304 & 316L).....ASTM A-240
- ▶ Other materials available upon request.

### TESTING

Rooftop supports have been tested by an accredited independent laboratory to the following:

- ▶ ASTM D575 Method B – Modified – Compression/Deflection
- ▶ ASTM D1171 Modified – Ozone Resistance
- ▶ Freeze/Thaw Environmental Simulation

H-Block products are engineered to work on most rough surfaces, such as asphalt, rubber and concrete. When an installation dictates that the block be placed on a smooth surface such as tile or steel, the installation will require an H-Pad to ensure that the block sidewalls do not protrude at an unnecessarily low load value.”

### FINISHES

All H-STRUT channels are stocked in pre-galvanized and powder coated Supr-Green. Some sizes are stocked in zinc trivalent chromium, PVC or hot dipped galvanized.

- ▶ HotDipped Galvanized.....ASTM A-123
- ▶ Zinc Trivalent Chromium.....ASTM B-633-85
- ▶ Powder Coated Supr-Green.....ASTM B-117
- ▶ Powder Coated White.....ASTM B-117
- ▶ Powder Coated Black.....ASTM B-117
- ▶ Powder Coated Gray.....ASTM B-117
- ▶ PVC Coating 40 ML Thickness - Available upon request

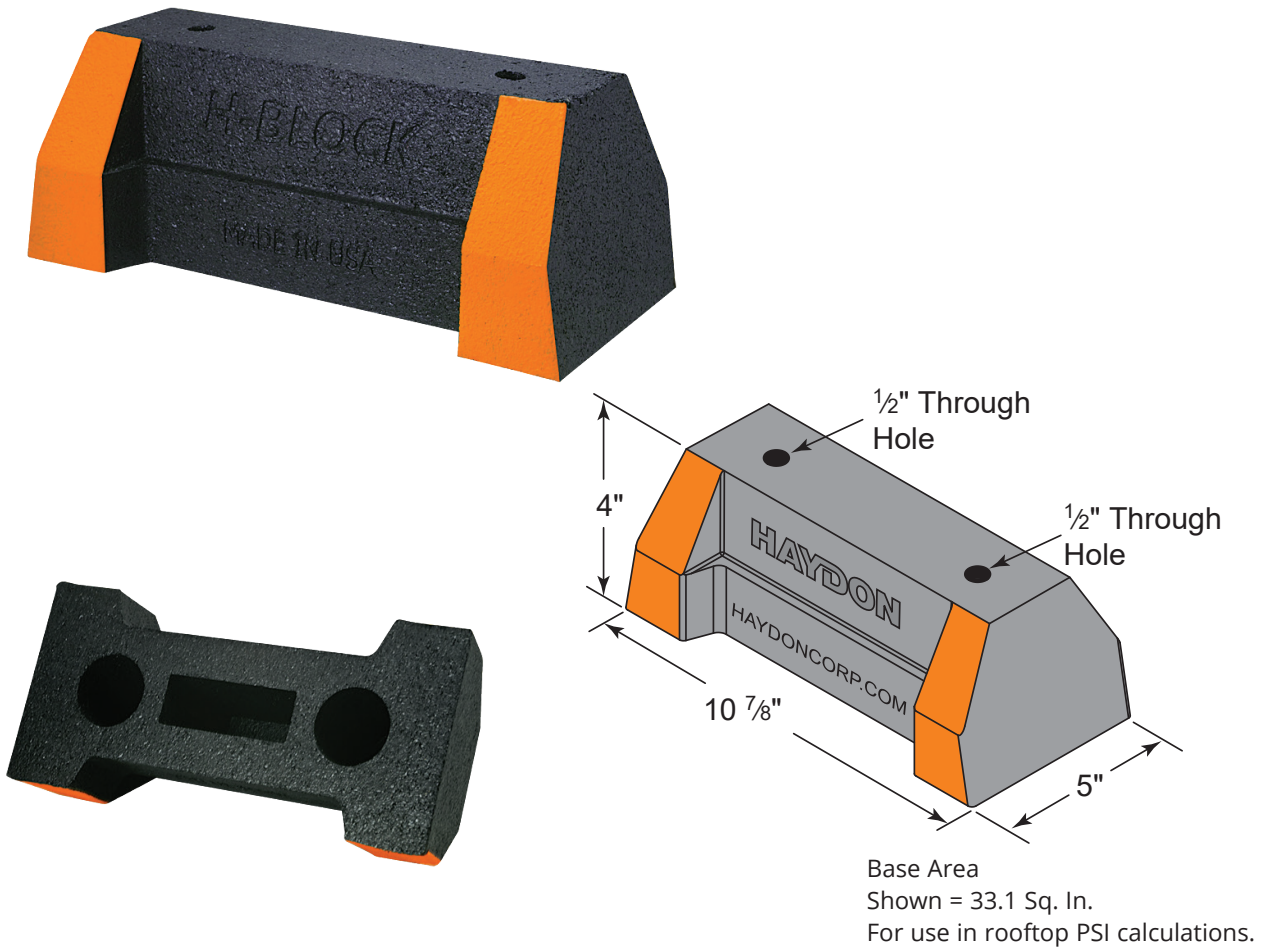
### BOLT TORQUE SETTINGS

Strut Torque Setting - All load capacities stated herein are based on the use of Haydon Grip Lock Nuts tightened to the torque values shown in technical section.

When attaching strut to H-Block, recommended bolt torque settings are 10-12 ft-lbs.

When attaching strut to steel, fittings recommended bolt torque settings are 50 ft-lbs.

Note: Consult roofing manufacturer or engineer for roof loading compatibility.



## HBS-BASE SERIES



Material - 100% recycled rubber

The HBS-Base Series is UV resistant and suitable for installation on most types of roofing material or other flat surfaces. Can be used as a curb (sleeper) replacement.

Screw fasteners can be used to attach one or two hole pipe straps or a piece of strut (not included).

Due to shipping constraints, only the rooftop components come pre-assembled. All rooftop support systems require final assembly before final application installation. An instruction sheet is included for every assembly required.

Model No.	Height	Width	Base Length	Weight (Lbs)	Uniform Load Capacity (Lbs) *	Safety Factor
HBS-Standard-Base Only	4" (101mm)	5" (127mm)	10 7/8" (276mm)	4.80	2,500	2.0

\* This load is only for the capacity of the components in this assembly. Please consult roofing manufacturer or engineer for roof load capacity.



# HBS SERIES

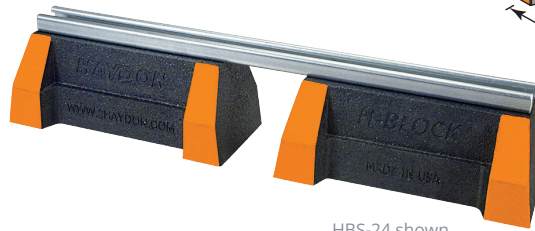


Like all of the H-Block supports, the HBS Series is perfect for supporting natural gas and refrigeration piping systems, cable tray, electrical conduit, multiple lines, HVAC equipment and many other applications.

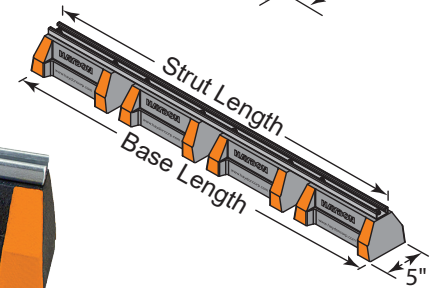
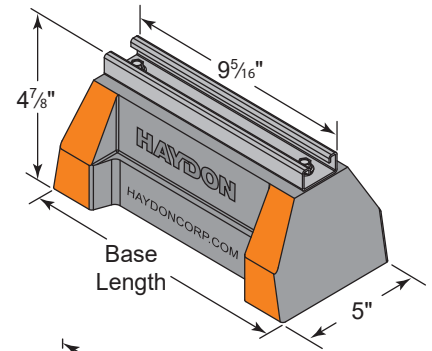
The HBS Series provides a longer mounting surface with strut lengths up to 8'.

Standard strut mount pipe clamps are used to secure the pipes.

The HBS Series is suitable for installation on most types of roofing material or other flat surfaces.



HBS-24 shown with two bases



## SPECIFICATIONS

Base Material - 100% recycled rubber

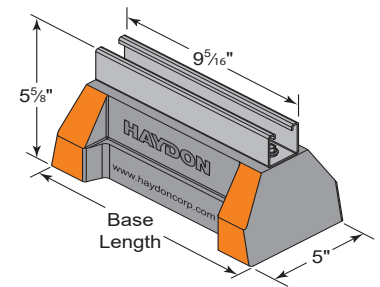
**HBS-Support With 1 3/16" H-164 Pre-Galvanized Steel Channel**

Model No.	Height	Width	No. of Bases Required	Strut Length	Base Length	Weight (Lbs)	Uniform Load Capacity (Lbs) *	Safety Factor
HBS-10-H-164-PG	4 7/8" (124mm)	5" (127mm)	1	9.312" (237mm)	10 7/8" (276mm)	5.62	2,500	2.0
HBS-24-H-164-PG			2	22.375" (568mm)	24" (610mm)	11.56	5,000	2.0
HBS-36-H-164-PG			3	34.375" (873mm)	36" (914mm)	17.41	7,500	2.0
HBS-48-H-164-PG			4	46.375" (1178mm)	48" (1219mm)	23.25	10,000	2.0

\* This load is only for the capacity of the components in this assembly. Please consult roofing manufacturer or engineer for roof load capacity.

\*\* Not recommended to be used with any pipe roller series.

Due to shipping constraints, only the rooftop components come pre-assembled. All rooftop support systems require final assembly before final application installation. An instruction sheet is included for every assembly required.



## SPECIFICATIONS

Base Material - 100% recycled rubber

**HBS-Support With 1 5/8" H-132 Pre-Galvanized Steel Channel**

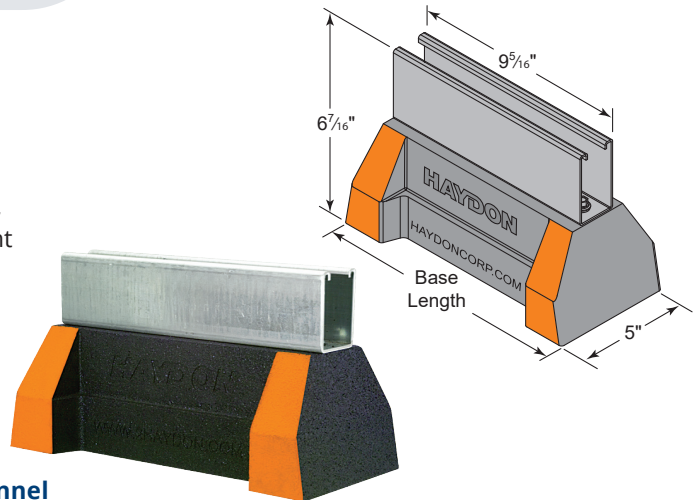
Model No.	Height	Width	No. of Bases Required	Strut Length	Base Length	Weight (Lbs)	Uniform Load Capacity (Lbs)*	Safety Factor
HBS-10-H-132-PG	5 5/8" (143mm)	5" (127mm)	1	9.312" (237mm)	10 7/8" (276mm)	6.26	2,500	2.0
HBS-24-H-132-PG			2	22.375" (568mm)	24" (610mm)	13.1	5,000	2.0
HBS-36-H-132-PG			3	34.375" (873mm)	36" (914mm)	19.77	7,500	2.0
HBS-48-H-132-PG			4	46.375" (1178mm)	48" (1219mm)	26.44	10,000	2.0

\* This load is only for the capacity of the components in this assembly. Please consult roofing manufacturer or engineer for roof load capacity.

# HBS-6 SERIES



Like all of the H-Block supports, the HBS-6 Series is perfect for supporting natural gas and refrigeration piping systems, cable tray, electrical conduit, multiple lines, HVAC equipment and many other applications. The HBS-6 Series provides a longer mounting surface with strut lengths up to 8'. The HBS-6 Series is UV resistant and suitable for installation on most types of roofing material or other flat surfaces.



## SPECIFICATIONS

Base Material - 100% recycled rubber

**HBS Support With 2 7/16" H-122 Pre-Galvanized Steel Channel**

Model No.	Height	Width	No. of Bases Required	Strut Length	Base Length	Weight (Lbs)	Uniform Load Capacity (Lbs) *	Safety Factor
HBS-6-10-H-122-PG	6 7/16" (165mm)	5" (127mm)	1	9.312" (237mm)	10 7/8" (276mm)	6.69	2,500	2.0
HBS-6-24-H-122-PG			2	22.375" (568mm)	24" (610mm)	14.13	5,000	2.0
HBS-6-36-H-122-PG			3	34.375" (873mm)	36" (914mm)	21.35	7,500	2.0
HBS-6-48-H-122-PG			4	46.375" (1178mm)	48" (1219mm)	28.58	10,000	2.0

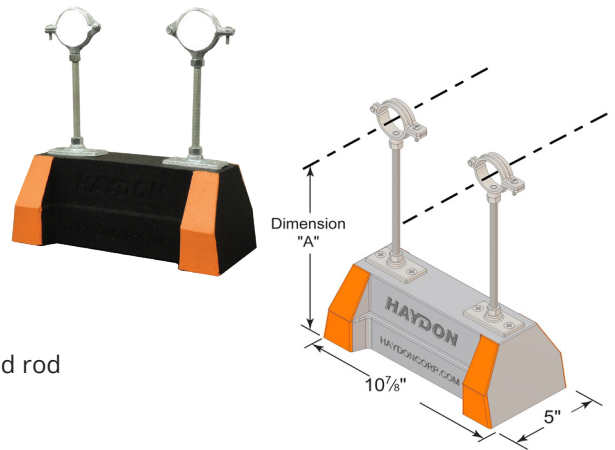
\* This load is only for the capacity of the components in this assembly. Please consult roofing manufacturer or engineer for roof load capacity.

Due to shipping constraints, only the rooftop components come pre-assembled. All rooftop support systems require final assembly before final application installation. An instruction sheet is included for every assembly required.

# HBS-HPC SERIES



Like all of the H-Block supports, the HBS-HPC Series is perfect for supporting natural gas and refrigeration piping systems, multiple lines, HVAC equipment and many other applications. The HBS-HPC Series is UV resistant and suitable for installation on most types of roofing material or other flat surfaces.



## SPECIFICATIONS

H-Block Support with hinged pipe clamp or rigid conduit and threaded rod

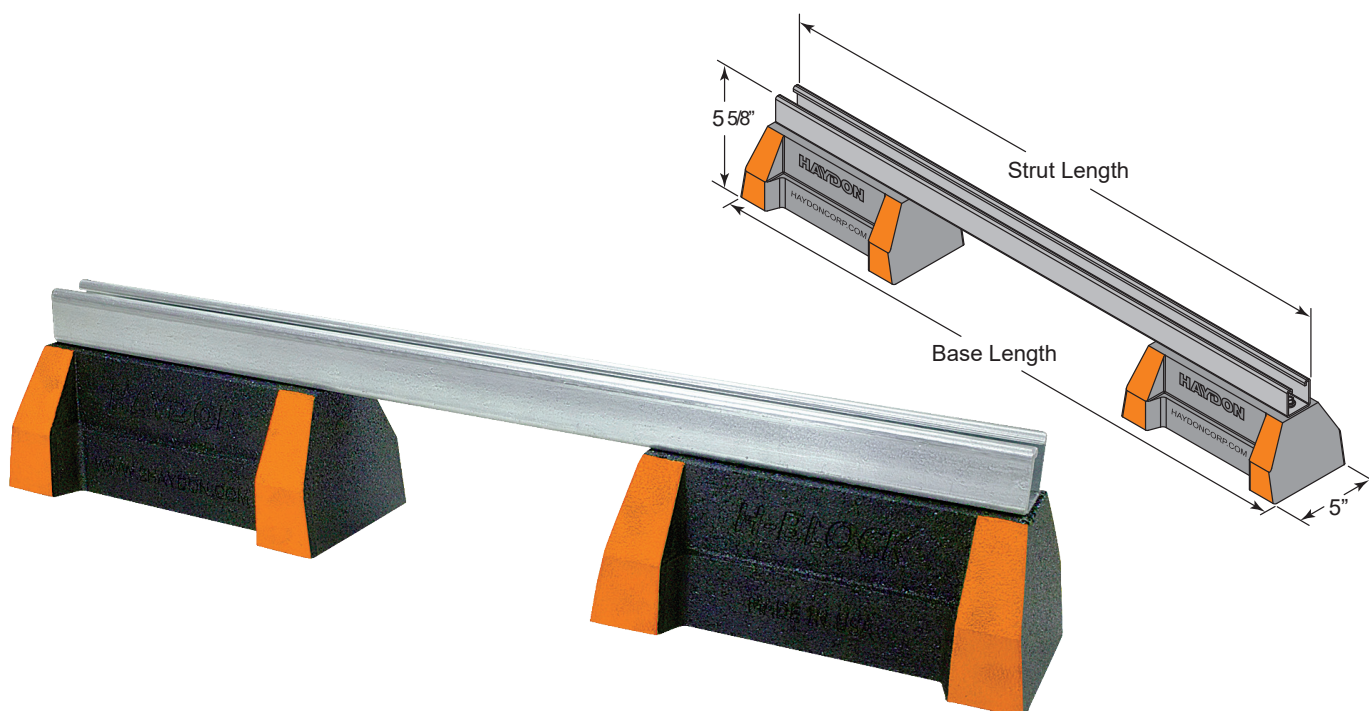
Base Material - 100% recycled rubber

**HBS-Support With Threaded Rod and 2 Pipe Clamps**

Model No.	Height to Centerline of Pipe (Dimension "A")		Width	Base Length	Weight (Lbs)	Total Load From Both Pipes (Lbs) *	Safety Factor
	Minimum	Maximum					
HBS-HPC-1/2"-EG	9 1/2" (241mm)	12" (305mm)	5" (127mm)	10 7/8" (168mm)	6.3	250	2.0
HBS-HPC-3/4"-EG	9 5/8" (244mm)	12 1/16" (306mm)			6.4	250	2.0
HBS-HPC-1"-EG	9 3/4" (248mm)	12 1/4" (311mm)			6.5	250	2.0
HBS-HPC-1 1/4"-EG	9 7/8" (251mm)	12 3/8" (314mm)			6.6	250	2.0
HBS-HPC-1 1/2"-EG	10" (254mm)	12 1/2" (317mm)			6.7	250	2.0
HBS-HPC-2"-EG	10 1/8" (257mm)	12 11/16" (322mm)			6.9	250	2.0

\* Each individual pipe to have maximum load of 125 lbs. This load is only for the capacity of the components in this assembly. Please consult roofing manufacturer or engineer for roof load capacity.





## HBS-CB BRIDGE SERIES

Like all of the H-Block supports, the HBS-CB-Bridge Series is perfect for supporting natural gas and refrigeration piping systems, cable tray, electrical conduit, multiple lines, HVAC equipment and many other applications.

The HBS-CB Series provides a longer mounting surface with strut lengths up to 8'.

The HBS-CB-Bridge Series is UV resistant and suitable for installation on most types of roofing material or other flat surfaces.

Due to shipping constraints, only the rooftop components come pre-assembled. All rooftop support systems require final assembly before final application installation. An instruction sheet is included for every assembly required.

### SPECIFICATIONS

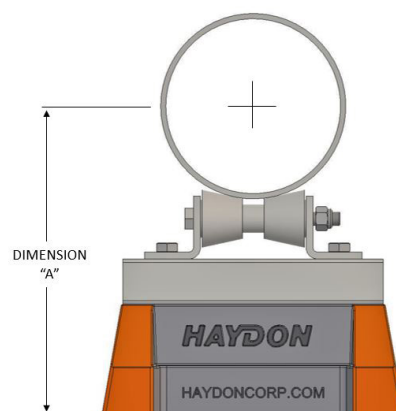
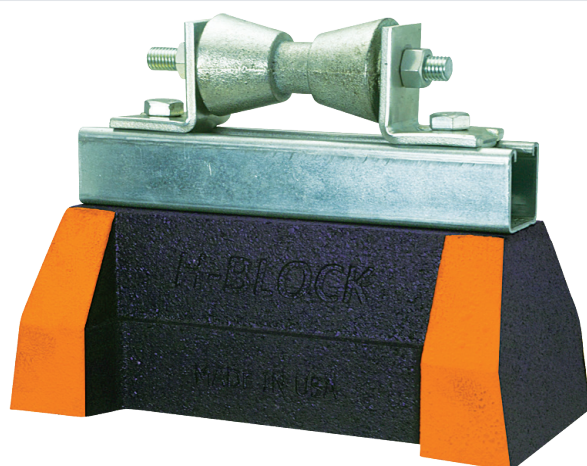
Base - Bridge style support with two H-Block bases & 1½" H-132 Channel

Base Material - 100% recycled rubber

#### HBS-CB-Bridge Series - Bridge Length Supports With 2 HBS Bases and Channel

Model No.	Height	Width	Strut Length	Base Length	Weight (Lbs)	Uniform Load Capacity (Lbs) *	Safety Factor
HBS-CB10-28-H-132-PG	5½" (143mm)	5" (127mm)	28" (711mm)	29¾" (756mm)	13.96	1,253	2.0
HBS-CB10-36-H-132-PG			36" (914mm)	37¾" (959mm)	15.18	974	2.0
HBS-CB10-42-H-132-PG			42" (1067mm)	43¾" (1111mm)	16.09	835	2.0
HBS-CB10-50-H-132-PG			50" (1270mm)	51¾" (1314mm)	17.31	702	2.0
HBS-CB10-60-H-132-PG			60" (1524mm)	61¾" (1568mm)	18.84	585	2.0

\* This load is only for the capacity of the components in this assembly. Please consult roofing manufacturer or engineer for roof load capacity.



## HBS-R ROLLER SERIES

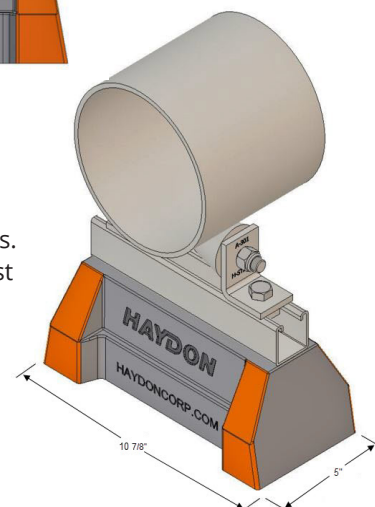
The HBS-R Series are designed for superior support of natural gas and refrigeration pipes. The roller allows for longitudinal movements of the pipe. This support is suitable for most types of roofing material or other flat surfaces.

### SPECIFICATIONS

H-Block Support with 1½" H-132 Channel and Rollers

Base Material - 100% recycled rubber

Pipe O.D. - 1" thru 6"



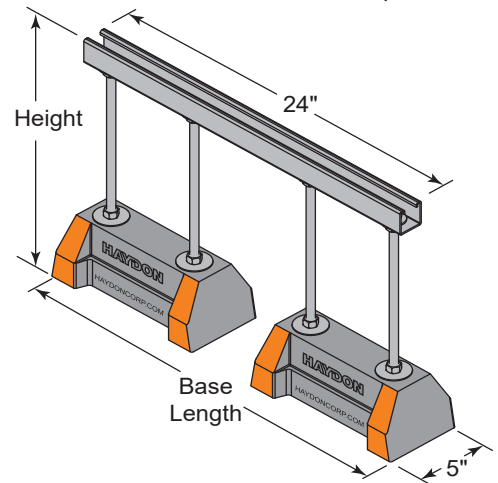
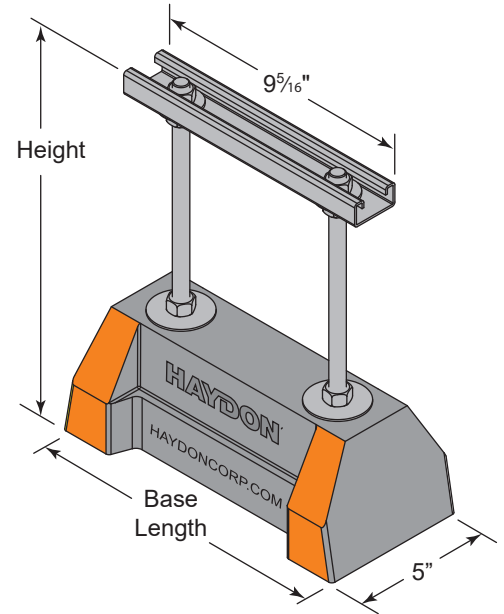
### HBS-R-Roller-Series With 1½" H-132 Pre-Galvanized Steel Channel With Rollers

Model No.	Nominal Pipe Size	Pipe OD (In)	Dist. Bottom Base to Center of Pipe (Dimension "A")	Strut Length	Base Width	Base Length	Weight (Lbs)	Uniform Load Capacity (Lbs)*	Safety Factor
HBS-R10-1-2-H-132-PG	1"	1.315" (33mm)	8⅜" (213mm)	9⅝" (237mm)	5" (127mm)	10⅞" (276mm)	9.1	2,500	2.0
HBS-R10-1-2-H-132-PG	1¼"	1.660" (42mm)	8⅞" (217mm)	9⅝" (237mm)	5" (127mm)	10⅞" (276mm)	9.1	2,500	2.0
HBS-R10-1-2-H-132-PG	1½"	1.900" (48mm)	8⅞" (221mm)	9⅝" (237mm)	5" (127mm)	10⅞" (276mm)	9.1	2,500	2.0
HBS-R10-1-2-H-132-PG	2"	2.375" (60mm)	8⅞" (227mm)	9⅝" (237mm)	5" (127mm)	10⅞" (276mm)	9.1	2,500	2.0
HBS-R10-2-3 1/2-H-132-PG	2"	2.375" (60mm)	9⅞" (230mm)	9⅝" (237mm)	5" (127mm)	10⅞" (276mm)	8.9	2,500	2.0
HBS-R10-2-3 1/2-H-132-PG	2½"	2.875" (73mm)	9⅞" (237mm)	9⅝" (237mm)	5" (127mm)	10⅞" (276mm)	8.9	2,500	2.0
HBS-R10-2-3 1/2-H-132-PG	3"	3.500" (89mm)	9⅞" (244mm)	9⅝" (237mm)	5" (127mm)	10⅞" (276mm)	8.9	2,500	2.0
HBS-R10-2-3 1/2-H-132-PG	3½"	4.000" (102mm)	9⅞" (248mm)	9⅝" (237mm)	5" (127mm)	10⅞" (276mm)	8.9	2,500	2.0
HBS-R10-4-6-H-132-PG	4"	4.500" (114mm)	10" (254mm)	9⅝" (237mm)	5" (127mm)	10⅞" (276mm)	9.4	2,500	2.0
HBS-R10-4-6-H-132-PG	5"	5.563" (141mm)	10⅞" (268mm)	9⅝" (237mm)	5" (127mm)	10⅞" (276mm)	9.4	2,500	2.0
HBS-R10-4-6-H-132-PG	6"	6.625" (168mm)	11⅞" (283mm)	9⅝" (237mm)	5" (127mm)	10⅞" (276mm)	9.4	2,500	2.0

Due to shipping constraints, only the rooftop components come pre-assembled. All rooftop support systems require final assembly before final application installation. An instruction sheet is included for every assembly required.

\* This load is only for the capacity of the components in this assembly. Please consult roofing manufacturer or engineer for roof load capacity.





## HBS-CE EXTENSION SERIES

HBS-CE-Extension Series is perfect for supporting natural gas and refrigeration piping systems, cable tray, electrical conduit, multiple lines, HVAC equipment and many other applications.

The HBS-CE-Extension is UV resistant and suitable for installation on most types of roofing material or other flat surfaces.

Due to shipping constraints, only the rooftop components come pre-assembled. All rooftop support systems require final assembly before final application installation. An instruction sheet is included for every assembly required.

### SPECIFICATIONS

Base Material - 100% recycled rubber

Two H-Block Bases and Threaded Rod Riser with:  $\frac{13}{16}$ " H-164 Channel, or  $\frac{15}{8}$ " H-132 Channel

#### HBS-CE-Extension Series Support With Threaded Rod Extension and Channel

Model No.	Height	Width	No. of Bases Required	Strut Length	Strut Size	Base Length	Weight (Lbs)	Uniform Load Capacity (Lbs) *	Safety Factor
HBS-CE10-8-H-164-PG	8" (203mm)	5" (127mm)	1	9.312" (237mm)	$\frac{13}{16}$ " H-164	$10\frac{7}{8}$ " (276mm)	6.89	1,000	2.0
HBS-CE10-12-H-164-PG	12" (305mm)		1				7.34	1,000	2.0
HBS-CE24-16-H-132-PG	16" (406mm)		2	24.000" (610mm)	$1\frac{5}{8}$ " H-132	26" (660mm)	15.85	1,462	2.0

\* This load is only for the capacity of the components in this assembly. Please consult roofing manufacturer or engineer for roof load capacity.

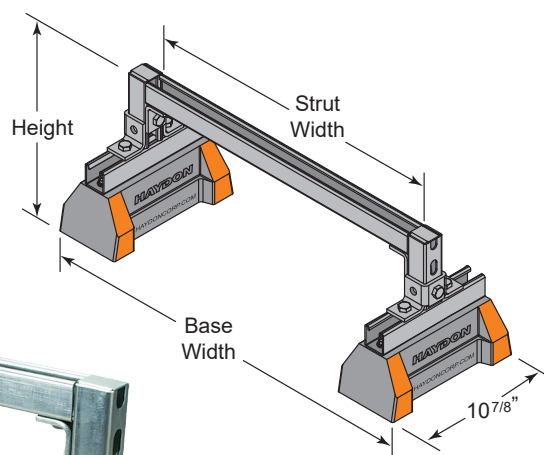
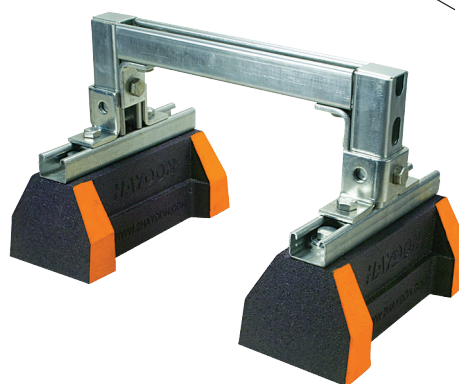
# HBS-CES SERIES



The HBS-CES-Medium Series can support natural gas and refrigeration piping systems, cable tray, electrical conduit, multiple lines, HVAC equipment and many other applications. They are designed for rooftop applications requiring a heavier load bearing capacity, and are suitable for most types of roofing material or other flat surfaces.

## SPECIFICATIONS

Two H-Block bases with 1 $\frac{5}{8}$ " H-132 Channel, or 3 $\frac{1}{4}$ " H-132-A Back-to-Back Channel  
Base Material - 100% recycled rubber



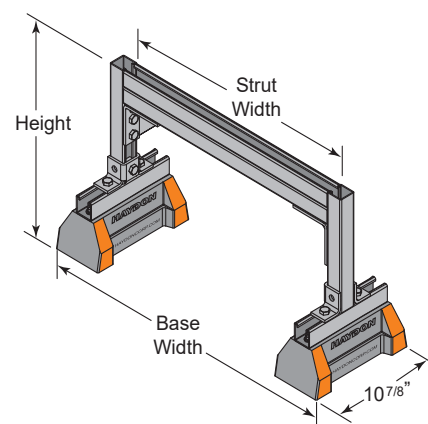
### Raised Bridge Length With 2 HBS Bases 1 $\frac{5}{8}$ " H-132 Pre-Galvanized Steel Channel

Model No.	Height	Base Width	Strut Length	Base Length	Weight (Lbs)	Uniform Load Capacity (Lbs) *	Safety Factor
HBS-CES-10-12-H-132-PG	10" (254mm)	18 $\frac{5}{8}$ " (473mm)	12" (305mm)	10 $\frac{7}{8}$ " (276mm)	19.35	2,572	2.0
HBS-CES-10-24-H-132-PG		30 $\frac{5}{8}$ " (763mm)	24" (610mm)		21.05	1,286	2.0

\* This load is only for the capacity of the components in this assembly. Please consult roofing manufacturer or engineer for roof load capacity.

Due to shipping constraints, only the rooftop components come pre-assembled. All rooftop support systems require final assembly before final application installation. An instruction sheet is included for every assembly required.

The HBS-CES-Heavy Series is designed for rooftop applications requiring a heavier load bearing capacity. It is suitable for most types of roofing material or other flat surfaces.



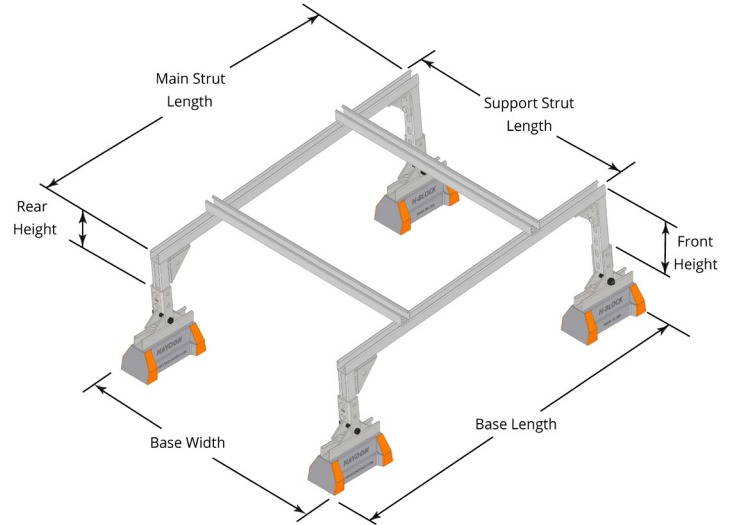
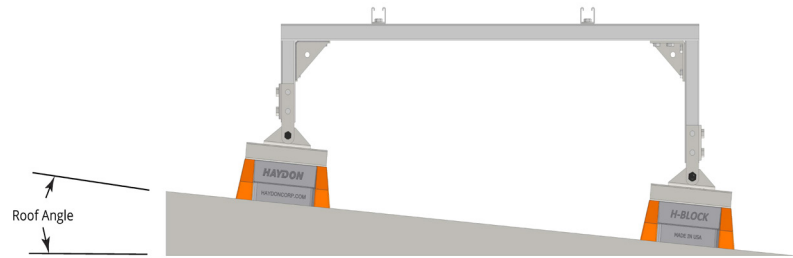
### Raised Bridge Length With 2 HBS Bases 3 $\frac{1}{4}$ " H-132-A Back-to-Back Pre-Galvanized Steel Channel

Model No.	Height	Base Width	Strut Length	Base Length	Weight (Lbs)	Uniform Load Capacity (Lbs) *	Safety Factor
HBS-CES-16-24-H-132-A-PG	16" (406mm)	30 $\frac{5}{8}$ " (763mm)	24" (610mm)	10 $\frac{7}{8}$ " (276mm)	30.62	2,940	2.0
HBS-CES-16-36-H-132-A-PG		42 $\frac{5}{8}$ " (1067mm)	36" (914mm)		32.96	2,738	2.0

\* This load is only for the capacity of the components in this assembly. Please consult roofing manufacturer or engineer for roof load capacity.



## NEW PRODUCT



## HBS-ICG INCLINED CONDENSING GRID SERIES



The HBS-ICG Series is designed specifically for supporting medium duty commercial rooftop inclined grid systems.

### SPECIFICATIONS

All hardware required for assembly is included.

Base Material - 100% recycled rubber.

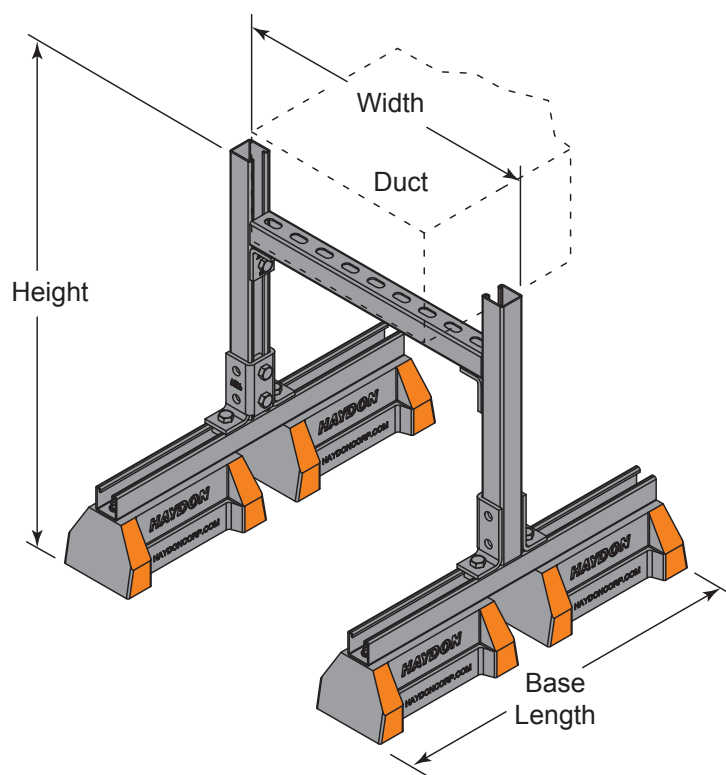
Four H-Block bases with 1 7/8" H-132-OS (5/16" slot) Channel.

### HBS-ICG-48-36 Inclined Condensing Grid Support Series with H-132-PG Main Support

Model No.	Roof Angle Min (Deg)	Front Height (In)	Rear Height (In)	Roof Angle Max (Deg)	Front Height (In)	Rear Height (In)	Base Width (In)	Base Length (In)	Main Strut Length (In)	Support Strut Length (In)	On Ground Capacity (Lbs) (At 2.0 Safety Factor*)	Rooftop Penetration Capacity (Lbs) (At 5 Psi*)
HBS-ICG-48-36-12-12-H-132-PG	0	10-1/2"	10-1/2"	1	10-3/16"	9-1/2"	39-3/8"	57-1/4"	48"	36"	766	660
HBS-ICG-48-36-10-12-H-132-PG	2	9-15/16"	8-3/16"	3	10-3/16"	7-7/8"	39-3/8"	57-1/4"	48"	36"	766	660
HBS-ICG-48-36-8-12-H-132-PG	4	9-1/2"	6-3/16"	5	9-15/16"	5-7/8"	39-3/8"	57-1/4"	48"	36"	766	660

Due to shipping constraints, only the rooftop components come pre-assembled. All rooftop support systems require final assembly before final application installation. An instruction sheet is included for every assembly required.

\*This load is only for the capacity of the components in this assembly with the support strut located at a distance 1/4 from each end of the main strut channel. For any other loading scenario, please consult the appropriate engineer. Please consult Roofing manufacturer or engineer for roof load capacity.



## HBS-DSFW

### FIXED WIDTH & ADJUSTABLE HEIGHT DUCT SUPPORT

The HBS-DSFW Series is designed specifically for supporting duct work.

### SPECIFICATIONS

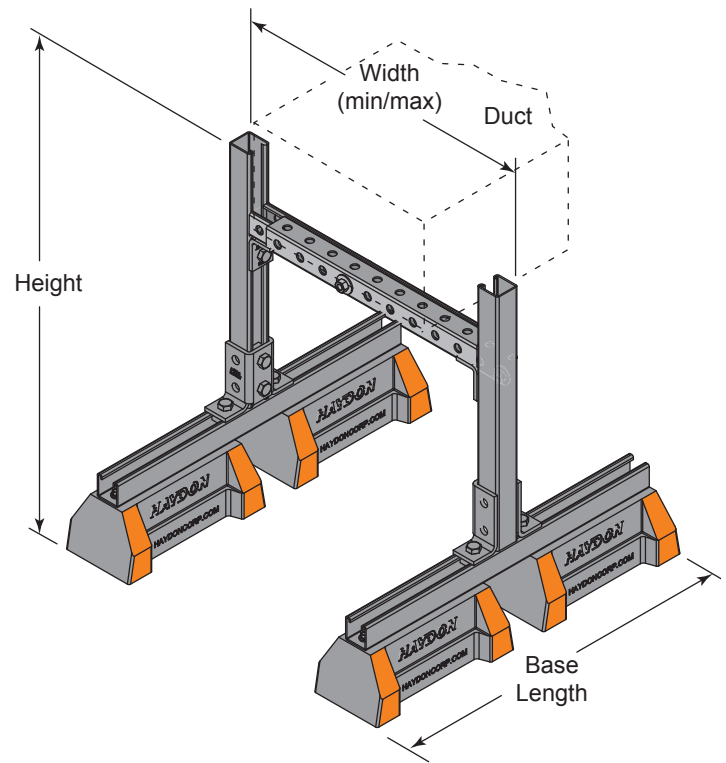
Fixed Width & Adjustable Height.  
All hardware required for assembly is included.  
Base Material - 100% recycled rubber  
Crossbeams - 1 $\frac{5}{8}$ " H-132-OS ( $\frac{1}{16}$ " slot) Channel

#### HBS-DS Duct Support Series With Fixed Width And Adjustable Height

Model No.	Height	Width	Base Length	No. of Bases	Weight (Lbs)	Uniform Load Capacity (Lbs) *	Safety Factor
HBS-DS2FW-23-18-H-132-PG	23" (584mm)	18" (457mm)	24" (610mm)	4	39.80	1,715	2.0
HBS-DS2FW-23-24-H-132-PG		24" (610mm)			40.67	1,286	2.0
HBS-DS2FW-23-36-H-132-PG		36" (914mm)			42.33	857	2.0
HBS-DS2FW-23-48-H-132-PG		48" (1219mm)			43.99	643	2.0
HBS-DS2FW-29-18-H-132-PG	29" (737mm)	18" (457mm)	24" (610mm)	4	41.58	1,715	2.0
HBS-DS2FW-29-24-H-132-PG		24" (610mm)			42.41	1,286	2.0
HBS-DS2FW-29-36-H-132-PG		36" (914mm)			44.08	857	2.0
HBS-DS2FW-29-48-H-132-PG		48" (1219mm)			45.74	643	2.0
HBS-DS2FW-41-18-H-132-PG	41" (1041mm)	18" (457mm)	24" (610mm)	4	45.07	1,715	2.0
HBS-DS2FW-41-24-H-132-PG		24" (610mm)			45.90	1,286	2.0
HBS-DS2FW-41-36-H-132-PG		36" (914mm)			47.56	857	2.0
HBS-DS2FW-41-48-H-132-PG		48" (1219mm)			49.22	643	2.0
HBS-DS3FW-53-18-H-132-PG	53" (1346mm)	18" (457mm)	36" (914mm)	6	62.23	1,715	2.0
HBS-DS3FW-53-24-H-132-PG		24" (610mm)			63.06	1,286	2.0
HBS-DS3FW-53-36-H-132-PG		36" (914mm)			64.72	857	2.0
HBS-DS3FW-53-48-H-132-PG		48" (1219mm)			66.38	643	2.0

Due to shipping constraints, only the rooftop components come pre-assembled. All rooftop support systems require final assembly before final application installation. An instruction sheet is included for every assembly required.

\* This load is only for the capacity of the components in this assembly. Please consult roofing manufacturer or engineer for roof load capacity.



## HBS-DSAW

### ADJUSTABLE WIDTH & HEIGHT DUCT SUPPORT

The HBS-DSAW Series is designed specifically for supporting duct work. The telescopic cross beam provides easy size adjustments.

A wide range of support widths are provided from 19 $\frac{1}{4}$ " to 103 $\frac{5}{8}$ "

### SPECIFICATIONS

Adjustable Width & Height.

All hardware required for assembly is included.

Base Material - 100% recycled rubber

Telescopic Crossbeams

1 $\frac{5}{8}$ " H-132-RS3 ( $\frac{9}{16}$ " holes on 3 sides) Channel

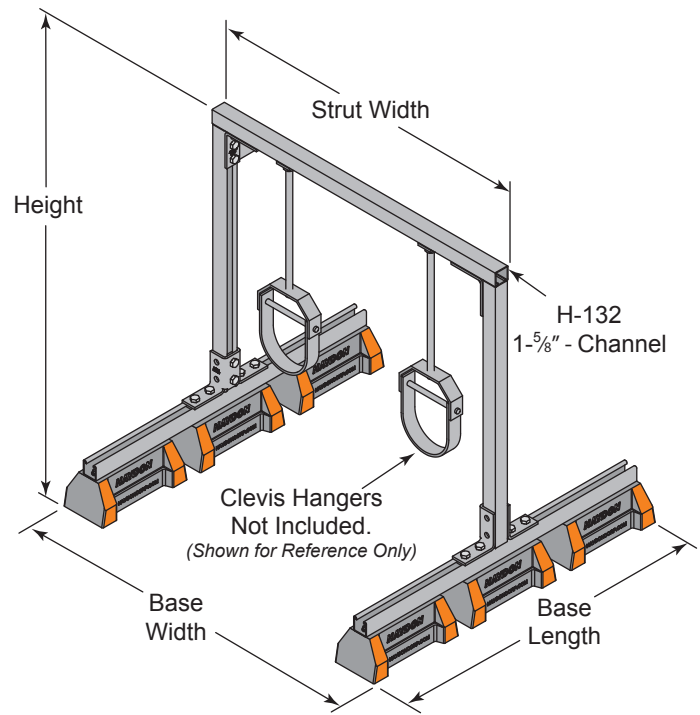
#### HBS-DS Duct Support Series With Fixed Width And Adjustable Height

Model No.	Width		Height	Base Length	No. of Bases	Weight (Lbs)	Uniform Load Capacity at Minimum Width (Lbs) *	Safety Factor
	Minimum	Maximum						
HBS-DSAW-29-20-26-H-132-PG	19 $\frac{1}{4}$ " (489mm)	26 $\frac{3}{4}$ " (679mm)	28.813" (732mm)	10 $\frac{7}{8}$ " (276mm)	2	29.61	1,604	2.0
HBS-DSAW-29-25-39-H-132-PG	24 $\frac{7}{8}$ " (632mm)	39 $\frac{7}{8}$ " (1013mm)		24" (610mm)	4	31.19	1,241	2.0
HBS-DS2AW-29-38-62-H-132-PG	38" (965mm)	62 $\frac{3}{8}$ " (1575mm)		36" (914mm)	6	46.47	812	2.0
HBS-DS3AW-29-63-103-H-132-PG	62 $\frac{3}{8}$ " (1584mm)	103 $\frac{5}{8}$ " (2617mm)	36" (914mm)	10 $\frac{7}{8}$ " (276mm)	2	66.90	495	2.0
HBS-DSAW-36-20-26-H-132-PG	19 $\frac{1}{4}$ " (489mm)	26 $\frac{3}{4}$ " (679mm)		24" (610mm)	4	30.61	1,604	2.0
HBS-DSAW-36-25-39-H-132-PG	24 $\frac{7}{8}$ " (632mm)	39 $\frac{7}{8}$ " (1013mm)		32.19	2	32.19	1,241	2.0
HBS-DS2AW-36-38-62-H-132-PG	38" (965mm)	62 $\frac{3}{8}$ " (1575mm)		47.47	4	47.47	812	2.0
HBS-DS3AW-36-63-103-H-132-PG	62 $\frac{3}{8}$ " (1584mm)	103 $\frac{5}{8}$ " (2617mm)		67.90	6	67.90	495	2.0

Due to shipping constraints, only the rooftop components come pre-assembled. All rooftop support systems require final assembly before final application installation. An instruction sheet is included for every assembly required.

\* This load is only for the capacity of the components in this assembly. Please consult roofing manufacturer or engineer for roof load capacity .





The HBS-PH Series is designed specifically for supporting piping.

## HBS-PH 36" LIGHT DUTY PIPE HANGER SUPPORT

### SPECIFICATIONS

Fixed Width & Height.  
All hardware required for assembly is included.  
Base Material - 100% recycled rubber  
Crossbeams - 1 $\frac{5}{8}$ " H-132 Channel

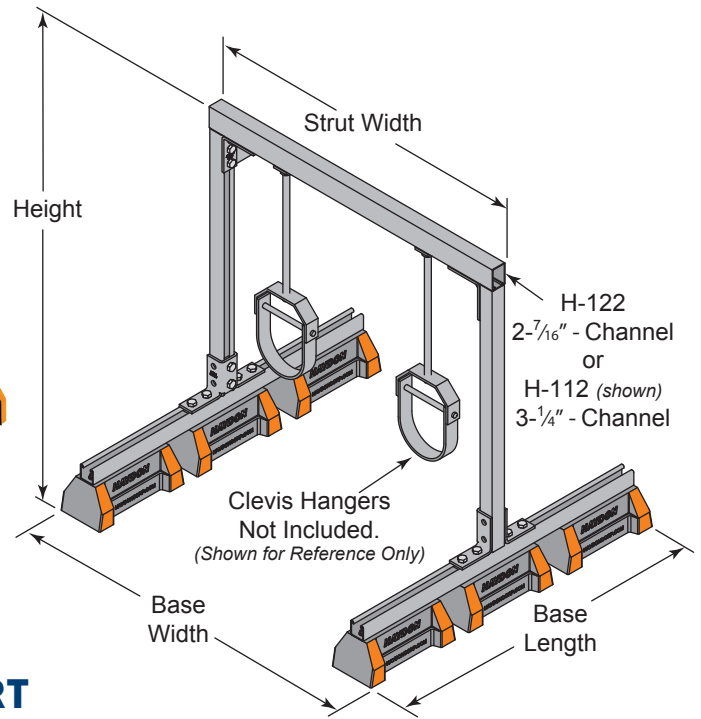
#### HBS-PH 36" Light Duty Pipe Hanger Support Series with H-132 PG Top Support

Model No.	Height	Strut Width	Base Width	Base Length	No. of Bases	Weight (Lbs)	Uniform Load Capacity (Lbs) *	Safety Factor
HBS-PH-36-36-H-132-PG	36" (914mm)	36" (914mm)	39 $\frac{3}{8}$ " (1000mm)	36" (914mm)	6	62	974	2.0
HBS-PH-36-48-H-132-PG		48" (1219mm)	51 $\frac{1}{8}$ " (1305mm)			64	731	2.0
HBS-PH-36-60-H-132-PG		60" (1524mm)	63 $\frac{3}{8}$ " (1610mm)			66	588	2.0
HBS-PH-36-72-H-132-PG		72" (1829mm)	75 $\frac{3}{8}$ " (1915mm)			68	487	2.0

Due to shipping constraints, only the rooftop components come pre-assembled. All rooftop support systems require final assembly before final application installation. An instruction sheet is included for every assembly required.

\* This load is only for the capacity of the components in this assembly with the pipe hangers located at a distance  $\frac{1}{4}$  from each end of the top channel. For any other loading scenario, please consult the appropriate engineer. Please consult Roofing manufacturer or engineer for roof load capacity.

The HBS-PH Series is designed specifically for supporting piping.



## HBS-PH 36" MEDIUM DUTY PIPE HANGER SUPPORT

### SPECIFICATIONS

Fixed Width & Height.

All hardware required for assembly is included.

Base Material - 100% recycled rubber

Crossbeams - 2-7/16" H-122 Channel or 3-1/4" H-112 Channel

#### HBS-PH 36" Medium Duty Pipe Hanger Support Series with H-122 PG Top Support

Model No.	Height	Strut Width	Base Width	Base Length	No. of Bases	Weight (Lbs)	Uniform Load Capacity (Lbs) *	Safety Factor
HBS-PH-36-36-H-122-PG	36" (914mm)	36" (914mm)	39 3/8" (1000mm)	36" (914mm)	6	63	1,856	2.0
HBS-PH-36-48-H-122-PG		48" (1219mm)	51 3/8" (1305mm)			66	1,394	2.0
HBS-PH-36-60-H-122-PG		60" (1524mm)	63 3/8" (1610mm)			68	1,117	2.0
HBS-PH-36-72-H-122-PG		72" (1829mm)	75 3/8" (1915mm)			71	932	2.0

\* This load is only for the capacity of the components in this assembly with the pipe hangers located at a distance 1/4 from each end of the top channel. For any other loading scenario, please consult the appropriate engineer. Please consult Roofing manufacturer or engineer for roof load capacity.

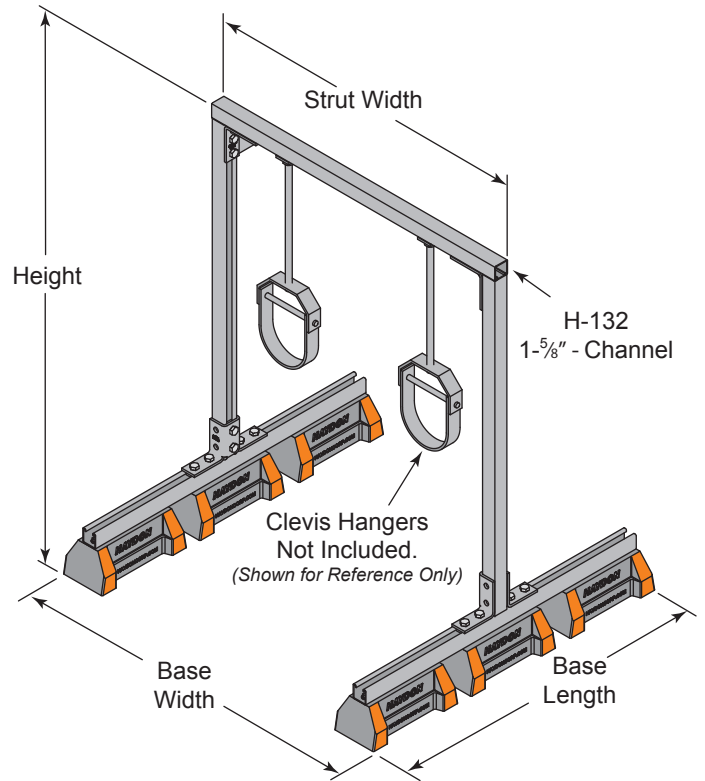
Due to shipping constraints, only the rooftop components come pre-assembled. All rooftop support systems require final assembly before final application installation. An instruction sheet is included for every assembly required.

#### HBS-PH 36" Medium Duty Pipe Hanger Support Series with H-112 PG Top Support

Model No.	Height	Strut Width	Base Width	Base Length	No. of Bases	Weight (Lbs)	Uniform Load Capacity (Lbs) *	Safety Factor
HBS-PH-36-36-H-112-PG	36" (914mm)	36" (914mm)	39 3/8" (1000mm)	36" (914mm)	6	65	2,974	2.0
HBS-PH-36-48-H-112-PG		48" (1219mm)	51 3/8" (1305mm)			68	2,226	2.0
HBS-PH-36-60-H-112-PG		60" (1524mm)	63 3/8" (1610mm)			71	1,781	2.0
HBS-PH-36-72-H-112-PG		72" (1829mm)	75 3/8" (1915mm)			74	1,487	2.0

\* This load is only for the capacity of the components in this assembly with the pipe hangers located at a distance 1/4 from each end of the top channel. For any other loading scenario, please consult the appropriate engineer. Please consult Roofing manufacturer or engineer for roof load capacity.

The HBS-PH Series is designed specifically for supporting piping.



## HBS-PH 48"

### LIGHT DUTY PIPE HANGER SUPPORT

#### SPECIFICATIONS

Fixed Width & Height.

All hardware required for assembly is included.

Base Material - 100% recycled rubber

Crossbeams - 1 $\frac{5}{8}$ " H-132 Channel

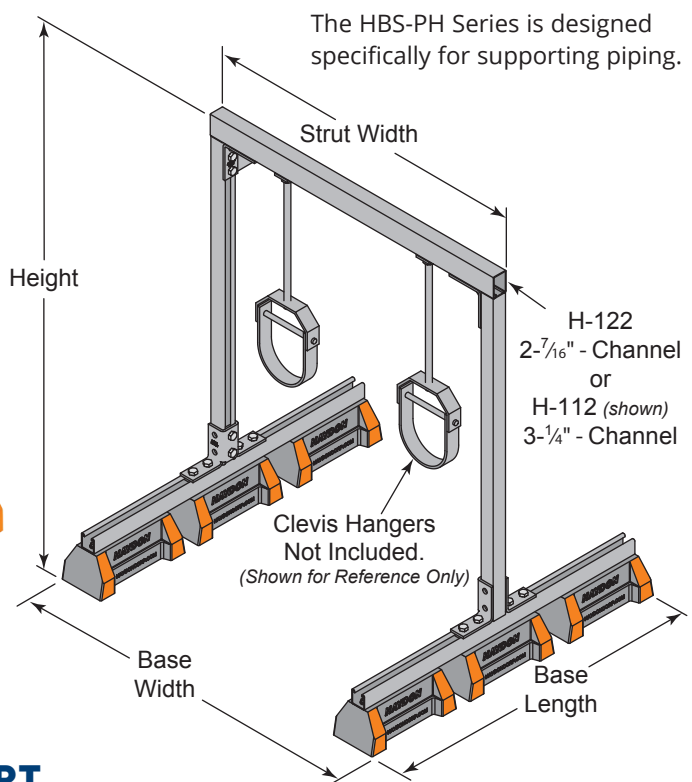
#### HBS-PH 48" Light Duty Pipe Hanger Support Series with H-132PG Top Support

Model No.	Height	Strut Width	Base Width	Base Length	No. of Bases	Weight (Lbs)	Uniform Load Capacity (Lbs) *	Safety Factor
HBS-PH-48-36-H-132-PG	48" (1219mm)	36" (914mm)	39 $\frac{3}{8}$ " (1000mm)	36" (914mm)	6	66	974	2.0
HBS-PH-48-48-H-132-PG		48" (1219mm)	51 $\frac{3}{8}$ " (1305mm)			68	731	2.0
HBS-PH-48-60-H-132-PG		60" (1524mm)	63 $\frac{3}{8}$ " (1610mm)			70	588	2.0
HBS-PH-48-72-H-132-PG		72" (1829mm)	75 $\frac{3}{8}$ " (1915mm)			72	487	2.0

Due to shipping constraints, only the rooftop components come pre-assembled. All rooftop support systems require final assembly before final application installation. An instruction sheet is included for every assembly required.

\* This load is only for the capacity of the components in this assembly with the pipe hangers located at a distance  $\frac{1}{4}$  from each end of the top channel. For any other loading scenario, please consult the appropriate engineer. Please consult Roofing manufacturer or engineer for roof load capacity.





## HBS-PH 48" MEDIUM DUTY PIPE HANGER SUPPORT

### SPECIFICATIONS

Fixed Width & Height.

All hardware required for assembly is included.

Base Material - 100% recycled rubber

Crossbeams - 2<sup>7</sup>/<sub>16</sub>" H-122 Channel or 3<sup>1</sup>/<sub>4</sub>" H-112 Channel

### HBS-PH 48" Medium Duty Pipe Hanger Support Series with H-122 PG Top Support

Model No.	Height	Strut Width	Base Width	Base Length	No. of Bases	Weight (Lbs)	Uniform Load Capacity (Lbs) *	Safety Factor
HBS-PH-48-36-H-122-PG	48" (1219mm)	36" (914mm)	39 <sup>3</sup> / <sub>8</sub> " (1000mm)	36" (914mm)	6	67	1,856	2.0
HBS-PH-48-48-H-122-PG		48" (1219mm)	51 <sup>3</sup> / <sub>8</sub> " (1305mm)			70	1,394	2.0
HBS-PH-48-60-H-122-PG		60" (1524mm)	63 <sup>3</sup> / <sub>8</sub> " (1610mm)			72	1,117	2.0
HBS-PH-48-72-H-122-PG		72" (1829mm)	75 <sup>3</sup> / <sub>8</sub> " (1915mm)			75	932	2.0

\* This load is only for the capacity of the components in this assembly with the pipe hangers located at a distance 1/4 from each end of the top channel.  
For any other loading scenario, please consult the appropriate engineer. Please consult Roofing manufacturer or engineer for roof load capacity.

Due to shipping constraints, only the rooftop components come pre-assembled. All rooftop support systems require final assembly before final application installation. An instruction sheet is included for every assembly required.

### HBS-PH 48" Medium Duty Pipe Hanger Support Series with H-112 PG Top Support

Model No.	Height	Strut Width	Base Width	Base Length	No. of Bases	Weight (Lbs)	Uniform Load Capacity (Lbs) *	Safety Factor
HBS-PH-48-36-H-112-PG	48" (1219mm)	36" (914mm)	39 <sup>3</sup> / <sub>8</sub> " (1000mm)	36" (914mm)	6	69	2,974	2.0
HBS-PH-48-48-H-112-PG		48" (1219mm)	51 <sup>3</sup> / <sub>8</sub> " (1305mm)			72	2,226	2.0
HBS-PH-48-60-H-112-PG		60" (1524mm)	63 <sup>3</sup> / <sub>8</sub> " (1610mm)			75	1,781	2.0
HBS-PH-48-72-H-112-PG		72" (1829mm)	75 <sup>3</sup> / <sub>8</sub> " (1915mm)			78	1,487	2.0

\* This load is only for the capacity of the components in this assembly with the pipe hangers located at a distance 1/4 from each end of the top channel.  
For any other loading scenario, please consult the appropriate engineer. Please consult Roofing manufacturer or engineer for roof load capacity.

# HBM-BASE ONLY

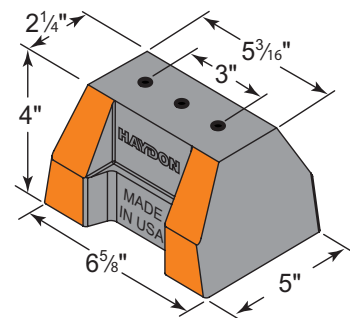


The HBM Series is designed specifically for single pipe supporting.

## SPECIFICATIONS

H-Block Mini Support

Material - 100% recycled rubber



### HBM-Base Series

Model No.	Height	Width	Base Length	Weight (Lbs)	Uniform Load Capacity (Lbs) *	Safety Factor
HBM-Standard-Base Only	4" (101mm)	5" (127mm)	6 5/8" (168mm)	2.50	400	2.0

\* This load is only for the capacity of the components in this assembly. Please consult roofing manufacturer or engineer for roof load capacity

# HBM-SERIES



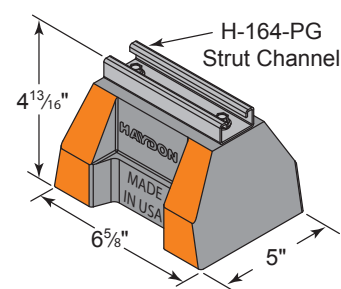
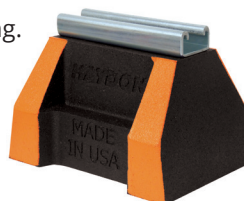
The HBM Series is designed specifically for single pipe supporting.

## SPECIFICATIONS

H-Block Mini Support with

1 3/16" H-164 Channel

Base Material - 100% recycled rubber



### HBM-Support With 1 3/16" H-164 Pre-Galvanized Steel Channel

Model No.	Height	Width	Base Length	Weight (Lbs)	Uniform Load Capacity (Lbs) *	Safety Factor
HBM-5-H-164-PG	4 7/8" (124mm)	5" (127mm)	6 5/8" (168mm)	2.9	400	2.0

\* This load is only for the capacity of the components in this assembly. Please consult roofing manufacturer or engineer for roof load capacity.

\*\* Not recommended to be used with any pipe roller series.

# HBM-SERIES

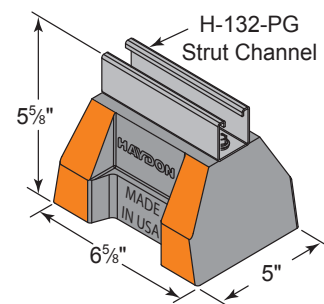
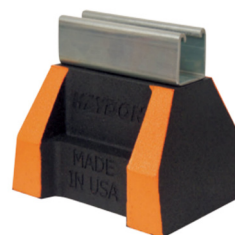


The HBM Series is designed specifically for single pipe supporting.

## SPECIFICATIONS

H-Block Mini Support with 1 5/8" H-132 Channel

Base Material - 100% recycled rubber



### HBM-Support With 1 5/8" H-132 Pre-Galvanized Steel Channel

Model No.	Height	Width	Base Length	Weight (Lbs)	Uniform Load Capacity (Lbs) *	Safety Factor
HBM-5-H-132-PG	4 7/8" (124mm)	5" (127mm)	6 5/8" (168mm)	3.4	400	2.0

\* This load is only for the capacity of the components in this assembly. Please consult roofing manufacturer or engineer for roof load capacity.

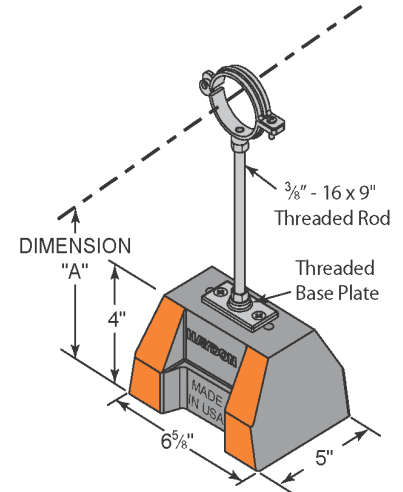
# HBM-HINGED PIPE CLAMP SERIES



The HBM-HPC Series is designed specifically for single pipe supporting.

## SPECIFICATIONS

H-Block Mini Support with Pipe Clamp and Threaded Rod  
Base Material - 100% recycled rubber



### HBM-Support With Threaded Rod and Pipe Clamp

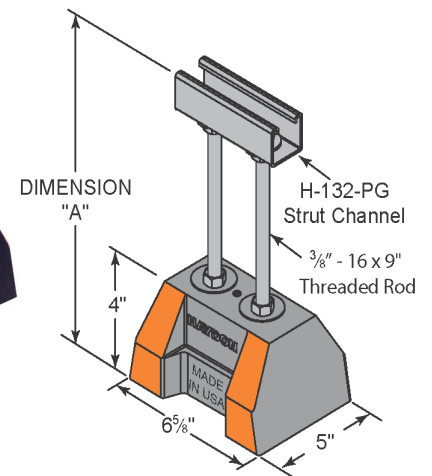
Model No.	Height to Centerline of Pipe (Dimension "A")		Width	Base Length	Weight (Lbs)	Total Load From Pipe (Lbs) *	Safety Factor
	Minimum	Maximum					
HBM-HPC-1/2"-EG	9 1/2" (241mm)	12" (305mm)	5" (127mm)	6 5/8" (168mm)	2.7	250	2.0
HBM-HPC-3/4"-EG	9 5/8" (244mm)	12 1/16" (306mm)			2.8	250	2.0
HBM-HPC-1"-EG	9 3/4" (248mm)	12 1/4" (311mm)			2.9	250	2.0
HBM-HPC-1 1/4"-EG	9 7/8" (251mm)	12 3/8" (314mm)			3.0	250	2.0
HBM-HPC-1 1/2"-EG	10" (254mm)	12 1/2" (317mm)			3.1	250	2.0
HBM-HPC-2"-EG	10 1/8" (257mm)	12 11/16" (322mm)			3.3	250	2.0

\* This load is only for the capacity of the components in this assembly. Please consult roofing manufacturer or engineer for roof load capacity.

# HBM-EXTENSION SERIES



The HBM-CE5 Series is designed specifically for single pipe supporting.



## SPECIFICATIONS

H-Block Mini Support with 1 5/8" H-132 Channel and 3/8" Threaded Rod  
Base Material - 100% recycled rubber

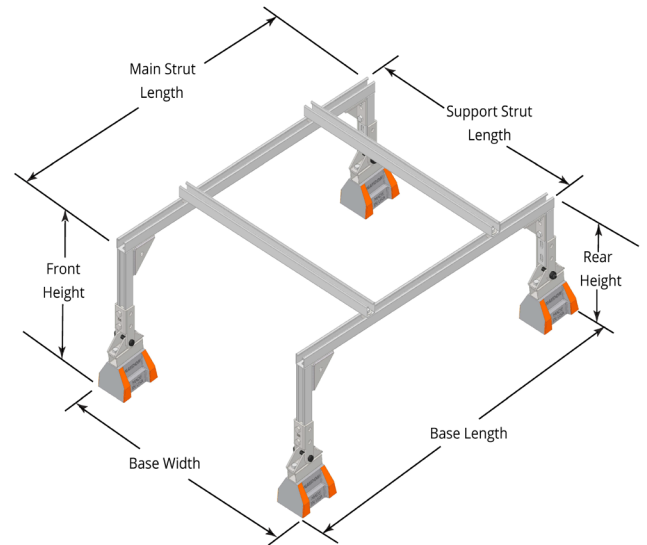
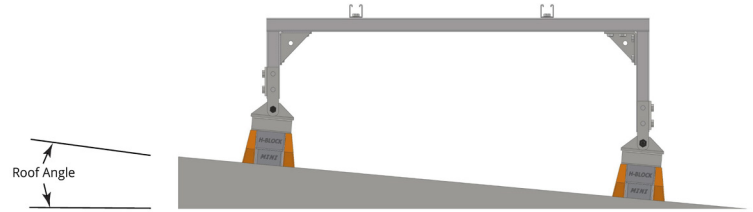
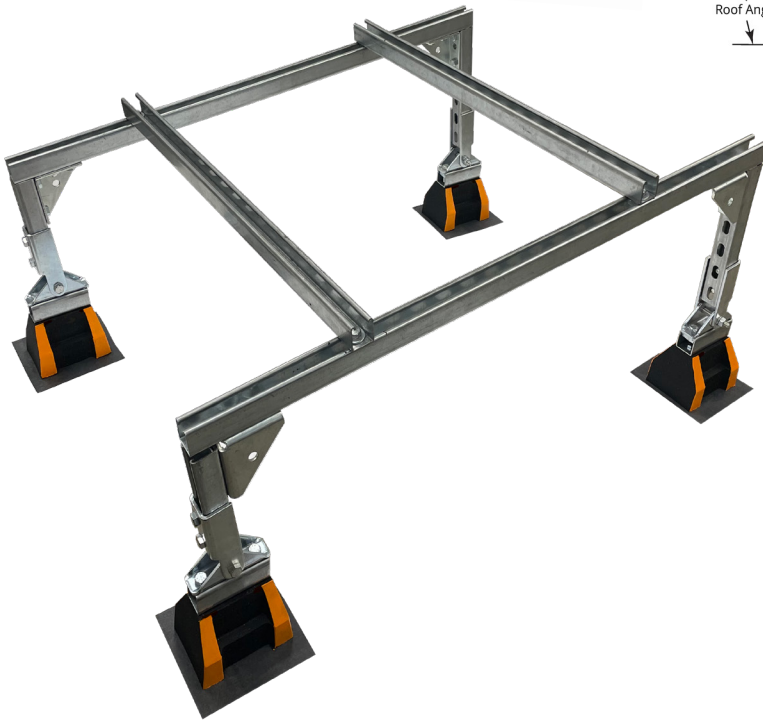
### HBM-Support With 1 5/8" H-132 Pre-Galvanized Steel Channel And Threaded Rod

Model No.	Height (Dimension "A")	Width	Base Length	Weight (Lbs)	Uniform Load Capacity (Lbs) *	Safety Factor
HBM-CE5-10-12-H-132	10"-12" (254mm-305mm)	5" (127mm)	6 5/8" (168mm)	4.0	175	2.0

\* This load is only for the capacity of the components in this assembly. Please consult roofing manufacturer or engineer for roof load capacity.



**NEW PRODUCT**



## HB-MINI-ICG

### INCLINED CONDENSING GRID SERIES

The HB-MINI-ICG Series is designed specifically for supporting light duty residential rooftop inclined grid systems.

### SPECIFICATIONS

All hardware required for assembly is included.

Base Material - 100% recycled rubber.

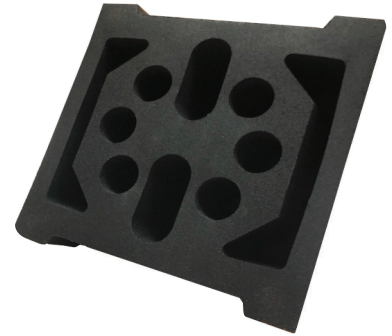
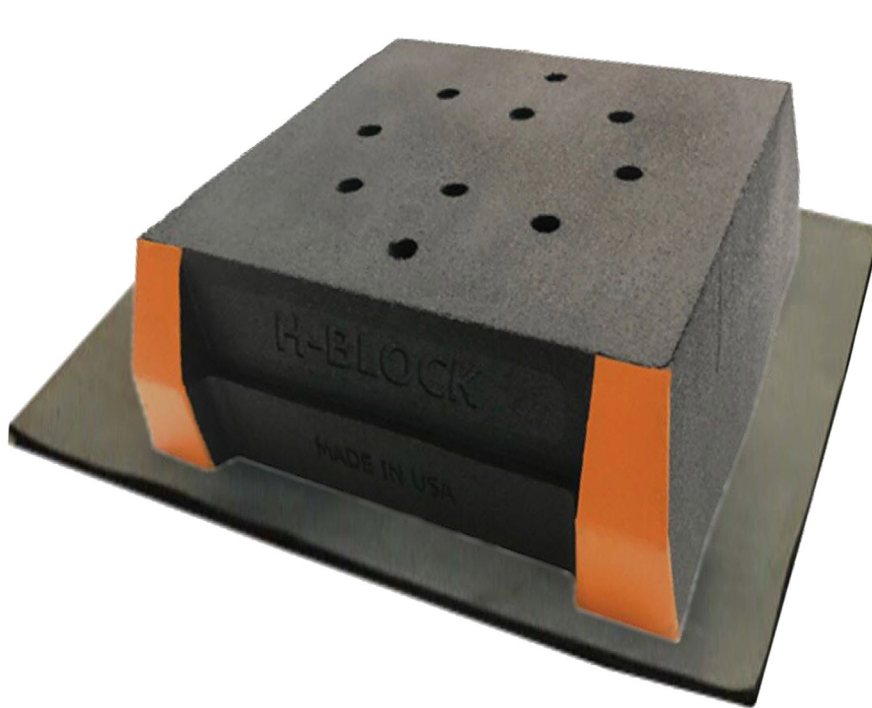
Four HB-Mini bases with 1 $\frac{5}{8}$ " H-132-OS ( $\frac{1}{16}$ " slot) Channel.

#### HB-MINI-ICG-48-36 Inclined Condensing Grid Support Series with H-132-PG Main Support

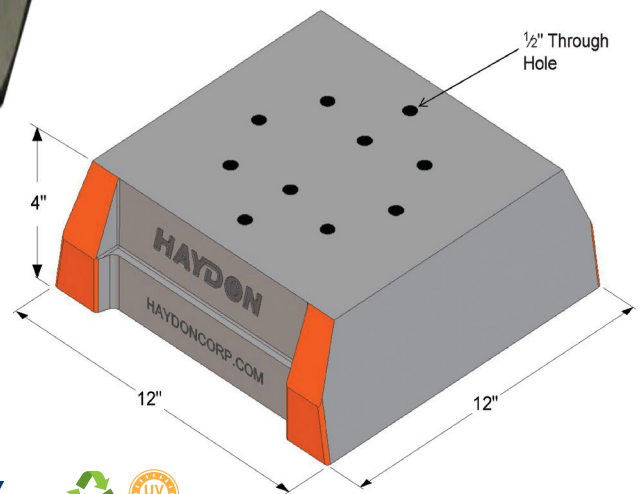
Model No.	Roof Angle Min (Deg)	Front Height (In)	Rear Height (In)	Roof Angle Max (Deg)	Front Height (In)	Rear Height (In)	Base Width (In)	Base Length (In)	Main Strut Length (In)	Support Strut Length (In)	On Ground Capacity (Lbs) (At 2.0 Safety Factor*)	Rooftop Penetration Capacity (Lbs) (At 5 Psi*)
HB-MINI-ICG-48-36-12-12-H-132-PG	0	10-5/16"	10-5/16"	1	10-5/16"	9-1/2"	39-3/8"	53-1/8"	48"	36"	766	328
HB-MINI-ICG-48-36-10-12-H-132-PG	2	9-15/16"	8-5/16"	3	10-5/16"	7-7/8"	39-3/8"	53-1/8"	48"	36"	766	328
HB-MINI-ICG-48-36-8-12-H-132-PG	4	9-9/16"	6-3/16"	5	9-15/16"	5-7/8"	39-3/8"	53-1/8"	48"	36"	766	328

Due to shipping constraints, only the rooftop components come pre-assembled. All rooftop support systems require final assembly before final application installation. An instruction sheet is included for every assembly required.

\*This load is only for the capacity of the components in this assembly with the support strut located at a distance 1/4 from each end of the main strut channel.  
For any other loading scenario, please consult the appropriate engineer. Please consult Roofing manufacturer or engineer for roof load capacity.



Base Area  
Shown = 90 Sq. In.  
For use in rooftop  
PSI Calculations.



## HB-MEGA BASE ONLY



The HB-Mega Series is UV resistant and suitable for installations on all types of roofing surfaces and on ground applications and can be used as a curb (sleeper) replacement. The HB-MEGA series can support natural gas, refrigeration, light to heavier pipe hanger support systems, and Adjustable and Fixed Duct Support Systems.

### SPECIFICATIONS

Material - 100% recycled rubber

#### HBM-Base Only Series

Model No.	Height	Width	Base Length	Weight (Lbs)	Uniform Load Capacity (Lbs) *	Safety Factor	Square Inches
HB-Mega-Base Only	4" (101mm)	12" (305mm)	12" (305mm)	14.8	7,500	2.0	90

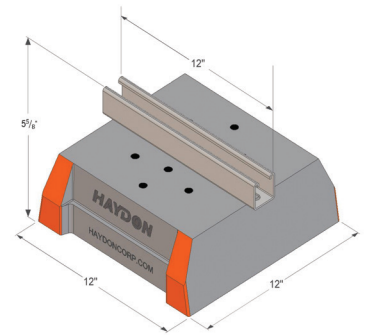
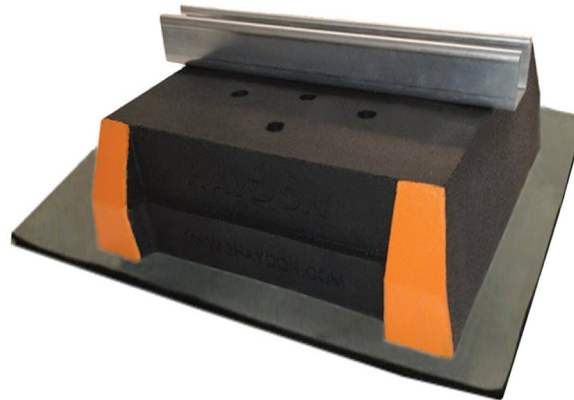
\* This load is only for the capacity of the components in this assembly. Please consult roofing manufacturer or engineer for roof load capacity

# HB-MEGA CHANNEL SERIES



## SPECIFICATIONS

Base Material - 100% recycled rubber



### HB-MEGA Support with 1 5/8" H-132 Pre-Galvanized Steel channel

Model No.	Height	Width	Base Length	Weight (Lbs)	Uniform Load Capacity (Lbs) *	Safety Factor	Square Inches
HB-Mega-12-H-132-PG	5 5/8" (143mm)	12" (305mm)	12" (305mm)	16.7	7,500	2.0	90

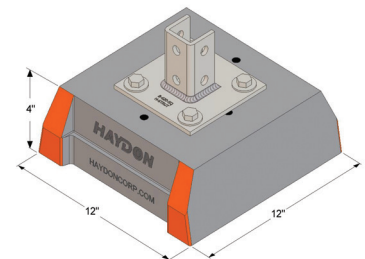
\* This load is only for the capacity of the components in this assembly. Please consult roofing manufacturer or engineer for roof load capacity.

# HB-MEGA POST BASE SERIES



## SPECIFICATIONS

Base Material - 100% recycled rubber

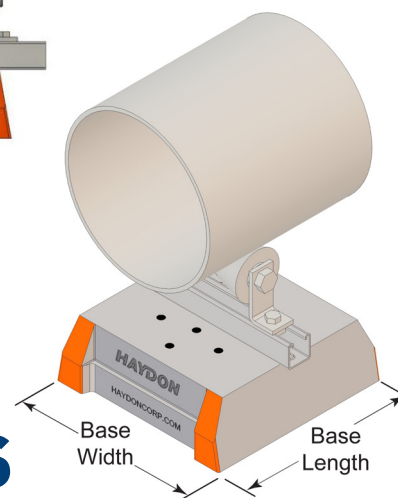
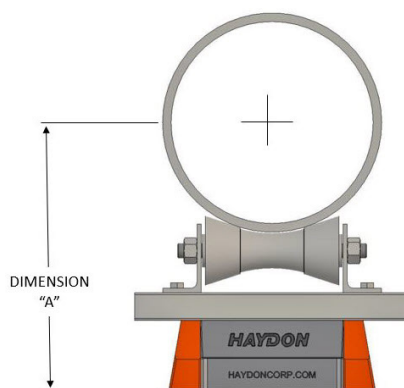
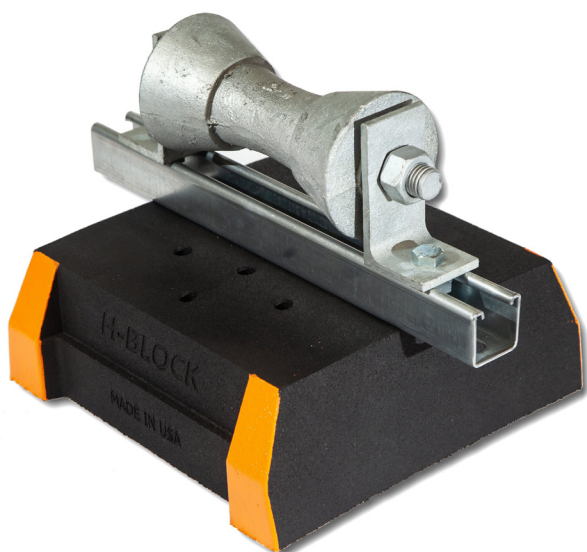


### HB-MEGA Support with Single B-620-SQ & Double B-620-A-SQ Post Base Electro-Galvanized Steel

Model No.	Height	Width	Base Length	Weight (Lbs)	Uniform Load Capacity (Lbs) *	Safety Factor	Square Inches
HB-Mega-PBSQ-EG	4" (101mm)	12" (305mm)	12" (305mm)	18.7	7,500	2.0	90
HB-Mega-PBSAQ-EG	4" (101mm)	12" (305mm)	12" (305mm)	19.8	7,500	2.0	90

\* This load is only for the capacity of the components in this assembly. Please consult roofing manufacturer or engineer for roof load capacity.





# HB-MEGA-R ROLLER SERIES

The HBS-MEGA-R Series are designed for superior support of natural gas and refrigeration pipes. The roller allows for longitudinal movements of the pipe. This support is suitable for most types of roofing material or other flat surfaces.



## SPECIFICATIONS

H-Block Support with 1½" H-132 Channel and Rollers

Base Material - 100% recycled rubber

Pipe O.D. - 12-3/4" thru 20"

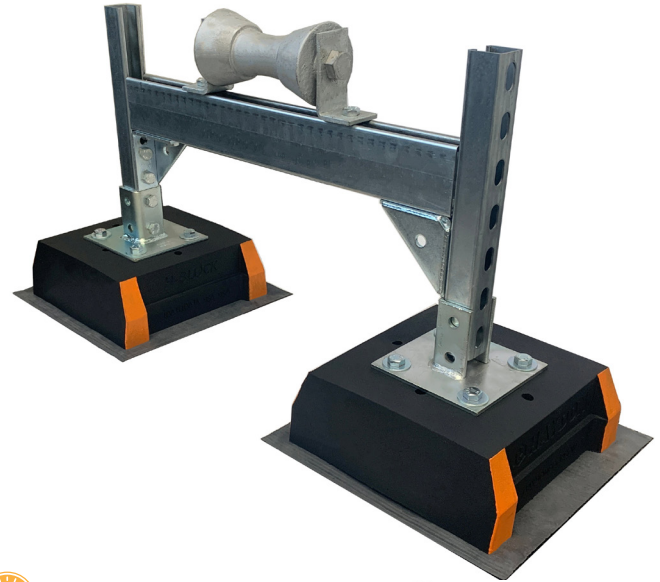
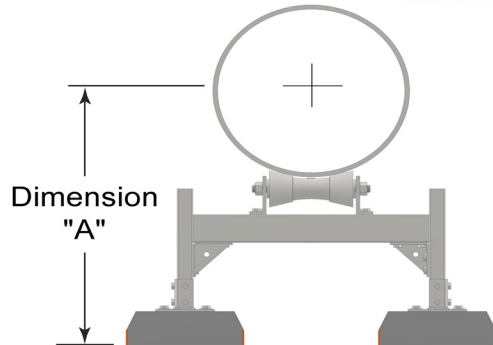
### HB-MEGA-R-Roller Series With 1½" H-132 Pre-Galvanized Steel Channel With Rollers

Model No.	Nominal Pipe Size	Pipe OD (In)	Dist. Bottom Base to Center of Pipe (Dimension "A")	Strut Length	Base Width	Base Length	Weight (Lbs)	Uniform Load Capacity (Lbs)*	Safety Factor
HB-MEGA-R12-8-10-H-132-PG	8"	8⅝" (219mm)	13½" (343mm)	12" (305mm)	12" (305mm)	12" (305mm)	23.9	7,500	2.0
HB-MEGA-R12-8-10-H-132-PG	10"	10¾" (273mm)	14⅞" (370mm)	12" (305mm)	12" (305mm)	12" (305mm)	23.9	7,500	2.0
HB-MEGA-R16-12-14-H-132-PG	12"	12¾" (324mm)	15½" (394mm)	16" (406mm)	12" (305mm)	12" (305mm)	28.3	7,500	2.0
HB-MEGA-R16-12-14-H-132-PG	14"	14" (356mm)	16⅞" (411mm)	16" (406mm)	12" (305mm)	12" (305mm)	28.3	7,500	2.0
HB-MEGA-R16-16-20-H-132-PG	16"	16" (406mm)	17⅝" (456mm)	16" (406mm)	12" (305mm)	12" (305mm)	32.6	7,500	2.0
HB-MEGA-R16-16-20-H-132-PG	18"	18" (457mm)	19" (483mm)	16" (406mm)	12" (305mm)	12" (305mm)	32.6	7,500	2.0
HB-MEGA-R16-16-20-H-132-PG	20"	20" (508mm)	20" (508mm)	16" (406mm)	12" (305mm)	12" (305mm)	32.6	7,500	2.0

Due to shipping constraints, only the rooftop components come pre-assembled. All rooftop support systems require final assembly before final application installation. An instruction sheet is included for every assembly required.

\* This load is only for the capacity of the components in this assembly. Please consult roofing manufacturer or engineer for roof load capacity.

**NEW PRODUCT**



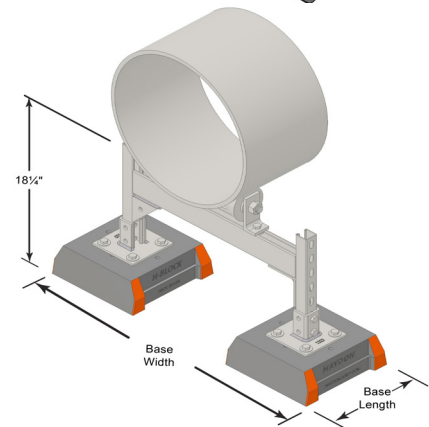
## HB-MEGA-CES-R ROLLER SERIES



The HB-MEGA-CES-R is an amazing innovation designed for superior support of water and steam pipes. The roller allows for longitudinal movement of the pipe allowing more flexibility of the pipe movement to prevent collapses.

### SPECIFICATIONS

All hardware required for assembly is included.  
Base Material - 100% recycled rubber



### HB-MEGA-CES-R Heavy Duty Support Roller-Series With 3-1/4" H-112-OS-PG Channel With Roller-Ground Applications

Model No.	Nom. Pipe Size	Pipe OD (In)	Dist. Bottom Base to Center of Pipe (Dimension "A") (Min-Max)	Strut Width	Base Width	Base Length	No. Of Bases	Unit Weight (Lbs)	Max Space Between Supports (Air & Steam) (Ft)	Max Space Between Supports (Water) (Ft)
HB-MEGA-CES18-R-8-10-H-112-OS-PG	8"	8-5/8"	23-1/16" to 26-1/6"	24"	37-5/8"	12"	2	60	24*	19*
HB-MEGA-CES18-R-8-10-H-112-OS-PG	10"	10-3/4"	24-3/16" to 27-3/16"	24"	37-5/8"	12"	2	60	28*	22*
HB-MEGA-CES18-R-12-14-H-112-OS-PG	12"	12-3/4"	24-5/16" to 27-5/16"	24"	37-5/8"	12"	2	64	30*	22**
HB-MEGA-CES18-R-12-14-H-112-OS-PG	14"	14"	25" to 28"	24"	37-5/8"	12"	2	64	32*	19**
HB-MEGA-CES18-R-16-20-H-112-OS-PG	16"	16"	27-9/16" to 30-9/16"	24"	37-5/8"	12"	2	68	35*	15**
HB-MEGA-CES18-R-16-20-H-112-OS-PG	18"	18"	28-5/8" to 31-5/8"	24"	37-5/8"	12"	2	68	37*	11**
HB-MEGA-CES18-R-16-20-H-112-OS-PG	20"	20"	29-5/8" to 32-5/8"	24"	37-5/8"	12"	2	68	37*	9**

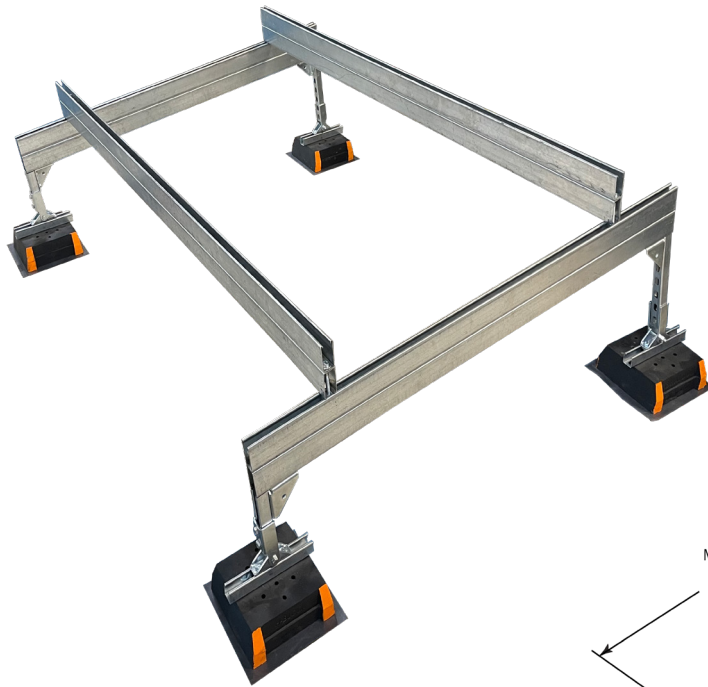
\* Schedule 40 Pipe is Load Limiting Factor / \*\*HB-Mega-CES-R is Load Limiting Factor

### HB-MEGA-CES-R Heavy Duty Support Roller Series with 3-1/4" H-112-OS-PG Channel With Roller-Roof Applications

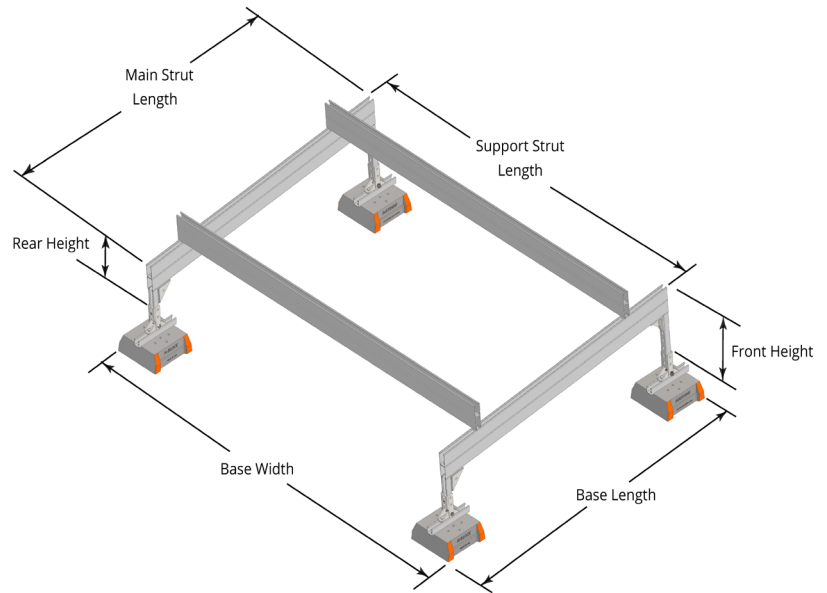
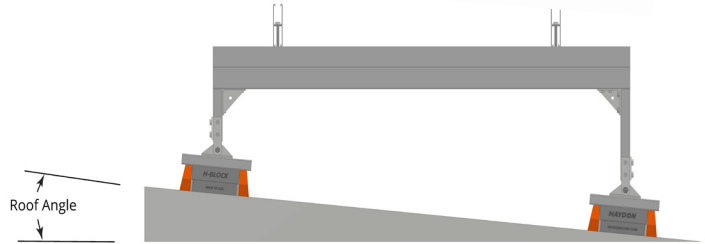
Model No.	Nom. Pipe Size	Pipe OD (In)	Dist. Bottom Base to Center of Pipe (Dimension "A") (Min-Max)	Strut Width	Base Width	Base Length	No. Of Bases	Unit Weight (Lbs)	Max Space Between Supports (Air & Steam) (Ft)	Resultant Rooftop PSI	Max Space Between Supports (Water) (Ft)	Resultant Rooftop PSI
HB-MEGA-CES18-R-8-10-H-112-OS-PG	8"	8-5/8"	23-1/16" to 26-1/6"	24"	37-5/8"	12"	2	60	10	4.92	7.5	4.95
HB-MEGA-CES18-R-8-10-H-112-OS-PG	10"	10-3/4"	24-3/16" to 27-3/16"	24"	37-5/8"	12"	2	60	8.5	4.74	6	4.76
HB-MEGA-CES18-R-12-14-H-112-OS-PG	12"	12-3/4"	24-5/16" to 27-5/16"	24"	37-5/8"	12"	2	64	7.5	4.90	5	4.61
HB-MEGA-CES18-R-12-14-H-112-OS-PG	14"	14"	25" to 28"	24"	37-5/8"	12"	2	64	7	4.94	4.5	4.63
HB-MEGA-CES18-R-16-20-H-112-OS-PG	16"	16"	27-9/16" to 30-9/16"	24"	37-5/8"	12"	2	68	6	4.87	4	4.94
HB-MEGA-CES18-R-16-20-H-112-OS-PG	18"	18"	28-5/8" to 31-5/8"	24"	37-5/8"	12"	2	68	5	4.81	3	4.50
HB-MEGA-CES18-R-16-20-H-112-OS-PG	20"	20"	29-5/8" to 32-5/8"	24"	37-5/8"	12"	2	68	4.5	4.78	2.5	4.32

Due to shipping constraints, only the rooftop components come pre-assembled. All rooftop support systems require final assembly before final application installation. An instruction sheet is included for every assembly required.

\* This load is only for the capacity of the components in this assembly. Please consult roofing manufacturer or engineer for roof load capacity.



**NEW PRODUCT**



## HB-MEGA INCLINED CONDENSING GRID SERIES

The HB-Mega-ICG Series is designed specifically for supporting heavy duty industrial rooftop inclined grid systems.

### SPECIFICATIONS

All hardware required for assembly is included.

Base Material - 100% recycled rubber.

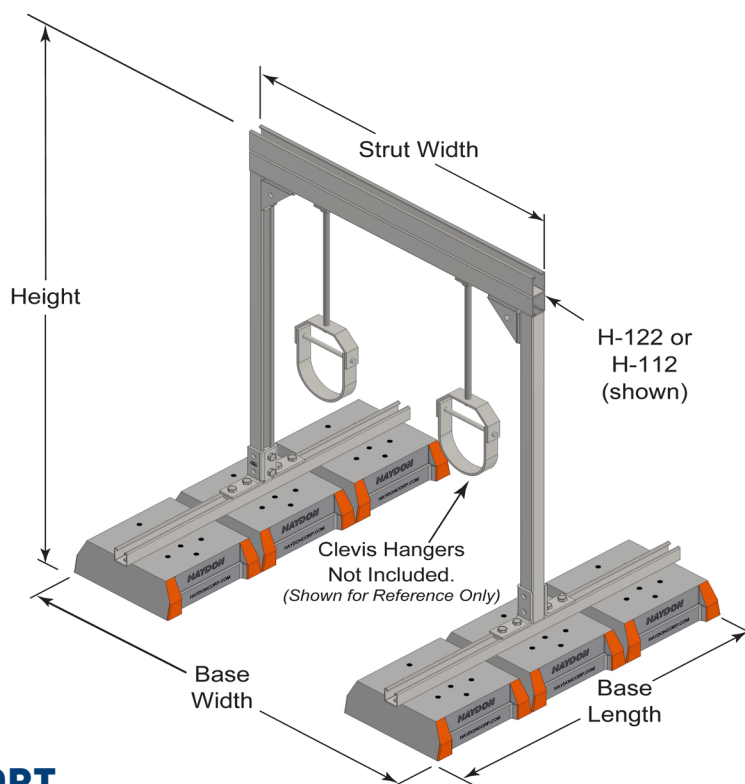
Four HB-Mega bases with 6-1/2" H-112-OSA (1/16" slot) welded channel.

### HB-Mega-ICG-96-72 Inclined Condensing Grid Support Series with H-112-OSA-PG Main Support

Model No.	Roof Angle Min (Deg)	Front Height (In)	Rear Height (In)	Roof Angle Max (Deg)	Front Height (In)	Rear Height (In)	Base Width (In)	Base Length (In)	Main Strut Length (In)	Support Strut Length (In)	On Ground Capacity (Lbs) (At 2.0 Safety Factor*)	Rooftop Penetration Capacity (Lbs) (At 5 Psi*)
HB-MEGA-ICG-96-72-12-12-H-112-A-PG	0	15-3/4"	15-3/4"	1	15-5/8"	14-3/8"	82-3/4"	106-3/8"	96"	72"	3546	1800
HB-MEGA-ICG-96-72-10-12-H-112-A-PG	2	14-3/4"	12-3/8"	N/A	N/A	N/A	82-3/4"	106-3/8"	96"	72"	3546	1800
HB-MEGA-ICG-96-72-8-12-H-112-A-PG	3	14-3/4"	11-1/8"	4	15-1/4"	10-3/8"	82-3/4"	106-3/8"	96"	72"	3546	1800
HB-MEGA-ICG-96-72-8-14-H-112-A-PG	5	16-15/16"	10-3/4"	N/A	N/A	N/A	82-3/4"	106-3/8"	96"	72"	3546	1800

Due to shipping constraints, only the rooftop components come pre-assembled. All rooftop support systems require final assembly before final application installation. An instruction sheet is included for every assembly required.

\*This load is only for the capacity of the components in this assembly with the support strut located at a distance 1/4 from each end of the main strut channel. For any other loading scenario, please consult the appropriate engineer. Please consult Roofing manufacturer or engineer for roof load capacity.



## HB-MEGA-PH-36\"/>

### SPECIFICATIONS

Fixed Width & Height.

All hardware required for assembly is included.

Base Material - 100% recycled rubber

Crossbeams - 4<sup>7</sup>/<sub>8</sub>\"/>



#### HB-MEGA-PH-36\"/>

Model No.	Height	Strut Width	Base Width	Base Length	No. of Bases	Weight (Lbs)	Uniform Load Capacity (Lbs) *	Safety Factor
HB-MEGA-PH-36-36-H-122A-PG	36\"/>	36\"/>	46 <sup>3</sup> / <sub>8</sub> \"/>	36\"/>	6	134	4,385	2.0
HB-MEGA-PH-36-48-H-122A-PG		48\"/>	58 <sup>3</sup> / <sub>8</sub> \"/>			139	4,091	2.0
HB-MEGA-PH-36-60-H-122A-PG		60\"/>	70 <sup>3</sup> / <sub>8</sub> \"/>			144	3,276	2.0
HB-MEGA-PH-36-72-H-122A-PG		72\"/>	82 <sup>3</sup> / <sub>8</sub> \"/>			149	2,730	2.0

\* This load is only for the capacity of the components in this assembly with the pipe hangers located at a distance 1/4 from each end of the top channel.  
For any other loading scenario, please consult the appropriate engineer. Please consult Roofing manufacturer or engineer for roof load capacity.

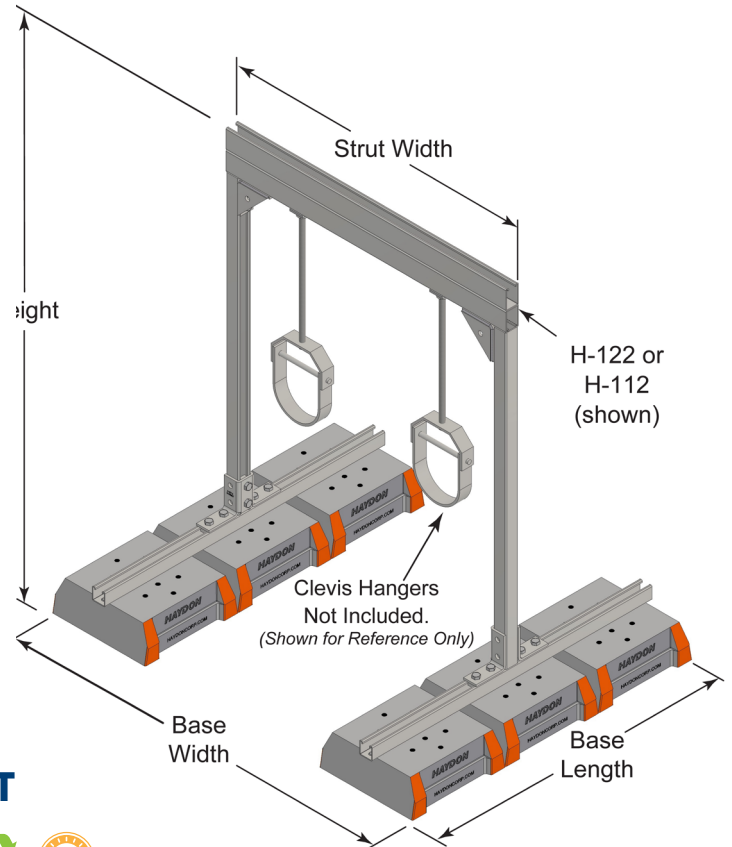
Due to shipping constraints, only the rooftop components come pre-assembled. All rooftop support systems require final assembly before final application installation. An instruction sheet is included for every assembly required.

#### HB-MEGA-PH-36\"/>

Model No.	Height	Strut Width	Base Width	Base Length	No. of Bases	Weight (Lbs)	Uniform Load Capacity (Lbs) *	Safety Factor
HB-MEGA-PH-36-36-H-112A-PG	36\"/>	36\"/>	46 <sup>3</sup> / <sub>8</sub> \"/>	36\"/>	6	138	5,788	2.0
HB-MEGA-PH-36-48-H-112A-PG		48\"/>	58 <sup>3</sup> / <sub>8</sub> \"/>			144	5,788	2.0
HB-MEGA-PH-36-60-H-112A-PG		60\"/>	70 <sup>3</sup> / <sub>8</sub> \"/>			150	5,418	2.0
HB-MEGA-PH-36-72-H-112A-PG		72\"/>	82 <sup>3</sup> / <sub>8</sub> \"/>			157	4,510	2.0

\* This load is only for the capacity of the components in this assembly with the pipe hangers located at a distance 1/4 from each end of the top channel.  
For any other loading scenario, please consult the appropriate engineer. Please consult Roofing manufacturer or engineer for roof load capacity.





# HB-MEGA-PH-48" HEAVY DUTY PIPE HANGER SUPPORT

## SPECIFICATIONS

Fixed Width & Height.

All hardware required for assembly is included.

Base Material - 100% recycled rubber

Crossbeams - 4<sup>7</sup>/<sub>8</sub>" H-122A Channel or 6<sup>1</sup>/<sub>2</sub>" H-112A Channel



## HB-MEGA-PH-48" Heavy Duty Pipe Hanger Support Series with H-122APG Top Support

Model No.	Height	Strut Width	Base Width	Base Length	No. of Bases	Weight (Lbs)	Uniform Load Capacity (Lbs) *	Safety Factor
HB-MEGA-PH-48-36-H-122A-PG	48" (1219mm)	36" (914mm)	46 <sup>3</sup> / <sub>8</sub> " (1000mm)	36" (914mm)	6	138	4,385	2.0
HB-MEGA-PH-48-48-H-122A-PG		48" (1219mm)	58 <sup>3</sup> / <sub>8</sub> " (1305mm)			143	4,091	2.0
HB-MEGA-PH-48-60-H-122A-PG		60" (1524mm)	70 <sup>3</sup> / <sub>8</sub> " (1610mm)			148	3,276	2.0
HB-MEGA-PH-48-72-H-122A-PG		72" (1829mm)	82 <sup>3</sup> / <sub>8</sub> " (1915mm)			153	2,730	2.0

\* This load is only for the capacity of the components in this assembly with the pipe hangers located at a distance 1/4 from each end of the top channel. For any other loading scenario, please consult the appropriate engineer. Please consult Roofing manufacturer or engineer for roof load capacity.

Due to shipping constraints, only the rooftop components come pre-assembled. All rooftop support systems require final assembly before final application installation. An instruction sheet is included for every assembly required.

## HB-MEGA-PH-48" Heavy Duty Pipe Hanger Support Series with H-112A PG Top Support

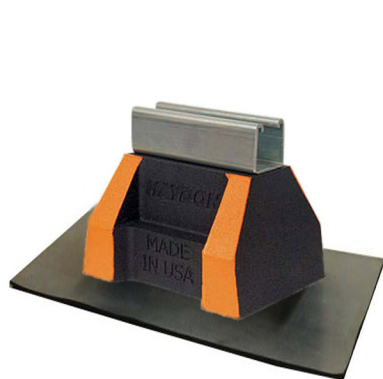
Model No.	Height	Strut Width	Base Width	Base Length	No. of Bases	Weight (Lbs)	Uniform Load Capacity (Lbs) *	Safety Factor
HB-MEGA-PH-48-36-H-112A-PG	48" (1219mm)	36" (914mm)	46 <sup>3</sup> / <sub>8</sub> " (1180mm)	36" (914mm)	6	142	5,788	2.0
HB-MEGA-PH-48-48-H-112A-PG		48" (1219mm)	58 <sup>3</sup> / <sub>8</sub> " (1485mm)			148	5,788	2.0
HB-MEGA-PH-48-60-H-112A-PG		60" (1524mm)	70 <sup>3</sup> / <sub>8</sub> " (1790mm)			154	5,418	2.0
HB-MEGA-PH-48-72-H-112A-PG		72" (1829mm)	82 <sup>3</sup> / <sub>8</sub> " (2095mm)			161	4,510	2.0

\* This load is only for the capacity of the components in this assembly with the pipe hangers located at a distance 1/4 from each end of the top channel. For any other loading scenario, please consult the appropriate engineer. Please consult Roofing manufacturer or engineer for roof load capacity.

# H-PAD SLIP SHEET FOR ALL H-BLOCK® SERIES



- ▶ Protects ALL types of rooftop membranes
- ▶ Limits movement
- ▶ Complies with most Building Codes
- ▶ Made from EPDM Rubber - 60 mil thickness
- ▶ Creates long-term sustainability for the H-Block Rooftop Support System.
- ▶ Recommended to be used with all rooftop support system assemblies.



**H-PAD MINI**



**H-PAD STANDARD**

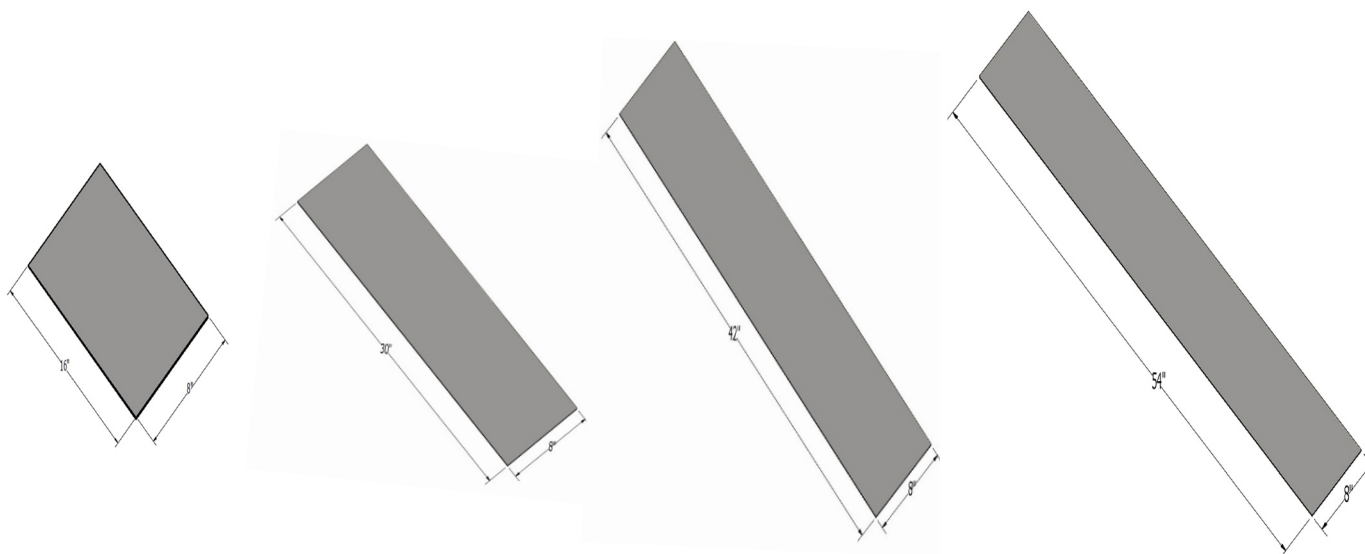


**H-PAD MEGA**

## H-Pad For All H-Block Series Rooftop Supports

Model No.	Length	Width	Thickness
H-Pad Mini	8" (203mm)	8" (203mm)	60 mil
H-Pad Standard	12" (305mm)	8" (203mm)	60 mil
H-Pad Mega	14" (356mm)	14" (356mm)	60 mil

# CUSTOM CUT H-PAD SLIP SHEET FOR MULTI H-BLOCKS



**UNIVERSAL**

**FOR 2 BLOCKS**

**FOR 3 BLOCKS**

**FOR 4 BLOCKS**

**H-Pad Custom Cut Length Options For H-Block Series Rooftop Supports - For Multiblocks**

Model No.	Length	Width	Thickness
H-Pad 8" x 16" - Universal	16" (406mm)	8" (203mm)	60 mil
H-Pad 8" x 30" - For 2 Blocks	30" (762mm)	8" (203mm)	60 mil
H-Pad 8" x 42"- For 3 Blocks	42" (1067mm)	8" (203mm)	60 mil
H-Pad 8" x 54" - For 4 Blocks	54" (1372mm)	8" (203mm)	60 mil

# H-BLOCK® ROOFTOP SUPPORT SYSTEMS VIDEO SERIES



## H-BLOCK OVERVIEW

A cost-effective, versatile solution for rooftop conduit support, duct support, solar racking, HVAC support, cable tray systems, roof walkway supports, single pipe applications, pipe, valves and fittings. The H-Block is compatible with all rooftop membranes and will not deteriorate—it is made from 100% recycled truck tires.



## H-BLOCK LEED CERTIFIABLE

The H-Block Rooftop Support System is LEEDs Certifiable, independently tested for freeze/thaw and ozone resistance, and made in the USA (meets the ARRA and Buy American Acts).



## H-BLOCK APPLICATIONS:

- ▶ Pipe & Conduit Supports
- ▶ Duct Supports
- ▶ HVAC Supports
- ▶ Cable Tray Systems
- ▶ Roof Walkway Supports
- ▶ Single Pipe Supports
- ▶ Seismic Systems
- ▶ Solar Racking

**LEARN MORE AT  
HAYDONCORP.COM  
OR ON YOUTUBE**





# H-BLOCK® SHIPPING COMPETITIVE ADVANTAGES

Assembled kits with all components are strapped together on a pallet and the smaller components are wrapped, placed inside the frame to avoid errors during assembly. Full list of items is included with all shipments.

Three convenient locations in Wayne, NJ, Grand Prairie, TX and Stockton, CA with stocking and distribution locations nationwide.



## PIPE CHARTS

**1" Pipe Size - 1.313" O.D.**

Schedule No.	40	80	160	
Wall Designation	Std.	XS		XXS
Thickness - In.	0.133	0.179	0.25	0.358
Pipe - Lbs/Ft.	1.68	2.17	2.84	3.66
Water - Lbs./Ft.	0.37	0.31	0.23	0.12

**1-¼" Pipe Size - 1.660" O.D.**

Schedule No.	40	80	160	
Wall Designation	Std.	XS		XXS
Thickness - In.	0.14	0.191	0.25	0.382
Pipe - Lbs/Ft.	2.27	3	3.76	5.22
Water - Lbs./Ft.	0.65	0.56	0.46	0.27

**1-½" Pipe Size - 1.900" O.D.**

Schedule No.	40	80	160	
Wall Designation	Std.	XS		XXS
Thickness - In.	0.145	0.2	0.281	0.4
Pipe - Lbs/Ft.	2.72	3.63	4.87	6.41
Water - Lbs./Ft.	0.88	0.77	0.61	0.41

**2" Pipe Size - 2.375" O.D.**

Schedule No.	40	80	160	
Wall Designation	Std.	XS		XXS
Thickness - In.	0.154	0.218	0.343	0.436
Pipe - Lbs/Ft.	3.65	5.02	7.45	9.03
Water - Lbs./Ft.	1.46	1.28	0.97	0.77

**2-½" Pipe Size - 2.875" O.D.**

Schedule No.	40	80	160	
Wall Designation	Std.	XS		XXS
Thickness - In.	0.203	0.276	0.375	0.552
Pipe - Lbs/Ft.	5.79	7.66	10	13.7
Water - Lbs./Ft.	2.08	1.84	1.54	1.07

**3" Pipe Size - 3.500" O.D.**

Schedule No.	40	80	160	
Wall Designation	Std.	XS		XXS
Thickness - In.	0.216	0.3	0.438	0.6
Pipe - Lbs/Ft.	7.58	10.3	14.3	18.6
Water - Lbs./Ft.	3.2	2.86	2.34	1.8

**3-½" Pipe Size - 4.000" O.D.**

Schedule No.	40	80	
Wall Designation	Std.	XS	XXS
Thickness - In.	0.266	0.318	0.636
Pipe - Lbs/Ft.	9.11	12.51	22.85
Water - Lbs./Ft.	4.28	3.85	2.53

**4" Pipe Size - 4.500" O.D.**

Schedule No.	40	80	120	160	
Wall Designation	Std.	XS			XXS
Thickness - In.	0.237	0.337	0.437	0.531	0.674
Pipe - Lbs/Ft.	10.8	15	19	22.5	27.5
Water - Lbs./Ft.	5.51	4.98	4.47	4.02	3.38

**5" Pipe Size - 5.563" O.D.**

Schedule No.	40	80	120	160	
Wall Designation	Std.	XS			XXS
Thickness - In.	0.258	0.375	0.5	0.625	0.75
Pipe - Lbs/Ft.	14.6	20.8	27.4	32.9	38.6
Water - Lbs./Ft.	8.66	7.89	7.06	7.33	5.62

**6" Pipe Size - 6.625" O.D.**

Schedule No.	40	80	120	160	
Wall Designation	Std.	XS			XXS
Thickness - In.	0.28	0.432	0.562	0.718	0.864
Pipe - Lbs/Ft.	19	28.6	36.4	45.3	53.2
Water - Lbs./Ft.	12.5	11.3	10.3	9.16	8.14

**8" Pipe Size - 8.625" O.D.**

Schedule No.	30	40	60	80	100	120	140		160
Wall Designation		Std.		XS				XXS	
Thickness - In.	0.277	0.322	0.406	0.5	0.593	0.718	0.812	0.875	0.906
Pipe - Lbs/Ft.	24.7	28.55	35.64	43.4	50.9	60.6	67.8	72.4	74.7
Water - Lbs./Ft.	22.18	21.69	20.79	19.8	18.8	17.6	16.7	16.1	15.8

**10" Pipe Size - 10.750" O.D.**

Schedule No.	30	40	60	80	100	120	140	160
Wall Designation		Std.	XS					
Thickness - In.	0.307	0.365	0.5	0.593	0.718	0.843	1	1.125
Pipe - Lbs/Ft.	34.24	40.5	54.7	64.3	76.9	89.2	104.1	115.7
Water - Lbs./Ft.	34.98	34.1	32.3	31.1	29.5	28	26.1	24.6

**12" Pipe Size - 12.750" O.D.**

Schedule No.	30		40		80	100	120	140	160
Wall Designation		Std.		XS					
Thickness - In.	0.33	0.375	0.406	0.5	0.687	0.843	1	1.125	1.312
Pipe - Lbs/Ft.	43.8	49.6	53.5	65.4	88.5	107.2	125.5	139.7	160.3
Water - Lbs./Ft.	49.7	49	48.5	47	44	41.6	39.3	37.5	34.9

**14" Pipe Size - 14.0" O.D.**

Schedule No.	20	30	40		80	100	120	140	160
Wall Designation		Std.		XS					
Thickness - In.	0.312	0.375	0.437	0.5	0.75	0.937	1.093	1.25	1.406
Pipe - Lbs/Ft.	45.7	54.6	63.4	72.1	106.1	130.7	150.7	170.2	189.1
Water - Lbs./Ft.	60.92	59.7	58.7	57.5	53.2	50	47.5	45	42.6

**16" Pipe Size - 20.0" O.D.**

Schedule No.	20	30	40	80	100	120	140	140	160
Wall Designation		Std.	XS						
Thickness - In.	0.312	0.375	0.5	0.843	1.031	1.218	1.437	1.75	1.593
Pipe - Lbs/Ft.	52.4	62.6	82.8	136.5	164.8	192.3	223.6	341.1	245.1
Water - Lbs./Ft.	80.5	79.1	76.5	69.7	66.1	62.6	58.6	92.6	55.9

**18" Pipe Size - 18.0" O.D.**

Schedule No.	20		30		40	60	80	120	160
Wall Designation		Std.		XS					
Thickness - In.	0.312	0.375	0.437	0.5	0.563	0.75	0.937	1.375	1.781
Pipe - Lbs/Ft.	59	70.6	82.1	93.5	104.8	138.2	170.8	244.1	308.5
Water - Lbs./Ft.	102.8	101.2	99.9	98.4	97	92.7	88.5	79.2	71

**20" Pipe Size - 20.0" O.D.**

Schedule No.	20	30	40	60	80	100	120	140	160
Wall Designation	Std.	XS							
Thickness - In.	0.375	0.5	0.593	0.812	1.031	1.281	1.5	1.75	1.968
Pipe - Lbs/Ft.	78.6	104.1	122.9	166.4	208.9	256.1	296.4	341.1	379
Water - Lbs./Ft.	126	122.8	120.4	115	109.4	103.4	98.3	92.6	87.9

**20" Pipe Size - 20.0" O.D.**

Schedule No.	20		40	60	80	100	120	140	160
Wall Designation	Std.	XS							
Thickness - In.	0.375	0.5	0.687	0.968	1.218	1.531	1.812	2.062	2.343
Pipe - Lbs/Ft.	94.6	125.5	171.2	238.1	296.4	367.4	429	484	541
Water - Lbs./Ft.	183.8	180.1	174.3	165.8	158.3	149.3	141	134	127

## THREADED ROD LOAD RATINGS

Threaded Rod Load Rating			
Nominal Rod Diameter, In.	Root Area Thread, In.	Maximum Safe Load, Lbs Rod Temperatures	
		650°F	750°F
3/8"	0.068	610	540
1/2"	0.128	1,130	1,010
5/8"	0.202	1,810	1,610
3/4"	0.302	2,710	2,420
7/8"	0.419	3,770	3,360
1"	0.552	4,960	4,420
1-1/8"	0.693	6,230	5,560
1-1/4"	0.889	8,000	7,140
1-1/2"	1.293	11,630	10,370
1-3/4"	1.744	15,700	14,000
2"	2.3	20,700	18,460

Rod Size as Determined by Pipe Size	
Pipe Size	Rod Size
3/4" to 2" Inclusive	3/8"
2-1/2" to 3-1/2"	1/2"
4" and 5"	5/8"
6"	3/4"
8" to 12" Inclusive	7/8"

## TORQUE SETTINGS

Haydon Grip Lock Nuts Torque Settings	
Grip Lock Nut Size	Ft.-Lbs.
1/4"- 20	6
5/16"- 18	11
3/8"- 16	19
1/2"- 13	50

## WATER FILLED PIPE WEIGHTS

Water Filled Pipe Weights For Pipe Hangers Located On 6 Ft Centers At 1/4 Span From Each End									
Size	2"	2-1/2"	3"	4"	5"	6"	8"	10"	12"
Sch 40 Pipe Weight Per Ft (Lbs)	3.65	5.79	7.57	10.78	14.6	18.95	28.52	40.44	53.47
Water Weight Per Ft (Lbs)	1.45	2.07	3.2	5.51	8.67	12.52	21.67	34.16	48.49
Total Weight Per Ft (Lbs)	5.1	7.86	10.77	16.29	23.27	31.47	50.2	74.6	101.96
Pipe Hanger Centers (Ft)	6	6	6	6	6	6	6	6	6
Total Weight Per 6 Ft Center - One Pipe (Lbs)	31	47	65	98	140	189	301	448	612
Total Weight Per 6 Ft Center - Two Pipes (Lbs)	61	94	129	196	279	378	602	895	1,223
Recommended 3 Ft Span Pipe Hanger Top Beam	H-132	H-132	H-132	H-132	H-132	H-132	H-122	H-112	H-112
Recommended 4 Ft Span Pipe Hanger Top Beam	H-132	H-132	H-132	H-132	H-132	H-122	H-112	H-112	H-122A
Recommended 5 Ft Span Pipe Hanger Top Beam	H-132	H-132	H-132	H-132	H-122	H-122	H-112	H-122A	H-122A
Recommended 6 Ft Span Pipe Hanger Top Beam	H-132	H-132	H-132	H-132	H-122	H-122	H-112	H-122A	H-112A

Water Filled Pipe Weights For Pipe Hangers Located On 8 Ft Centers At 1/4 Span From Each End									
Size	2"	2-1/2"	3"	4"	5"	6"	8"	10"	12"
Sch 40 Pipe Weight Per Ft (Lbs)	3.65	5.79	7.57	10.78	14.6	18.95	28.52	40.44	53.47
Water Weight Per Ft (Lbs)	1.45	2.07	3.2	5.51	8.67	12.52	21.67	34.16	48.49
Total Weight Per Ft (Lbs)	5.1	7.86	10.77	16.29	23.27	31.47	50.2	74.6	101.96
Pipe Hanger Centers (Ft)	8	8	8	8	8	8	8	8	8
Total Weight Per 8 Ft Center - One Pipe (Lbs)	41	63	86	130	186	252	402	597	816
Total Weight Per 8 Ft Center - Two Pipes (Lbs)	82	126	172	261	372	504	803	1,194	1,631
Recommended 3 Ft Span Pipe Hanger Top Beam	H-132	H-132	H-132	H-132	H-132	H-122	H-112	H-112	H-122A
Recommended 4 Ft Span Pipe Hanger Top Beam	H-132	H-132	H-132	H-132	H-122	H-122	H-112	H-112A	H-122A
Recommended 5 Ft Span Pipe Hanger Top Beam	H-132	H-132	H-132	H-122	H-122	H-112	H-122A	H-122A	H-112A
Recommended 6 Ft Span Pipe Hanger Top Beam	H-132	H-132	H-132	H-122	H-122	H-112	H-122A	H-112A	H-112A

## MAXIMUM SPACING BETWEEN SUPPORTS

Nominal Tube Size, In.	1/2"	3/4"	1"	1 1/2"	2	2 1/2"	3	3 1/2"	4
Maximum Span, Ft.	5	6	6	8	9	10	10	11	12

Nominal Pipe Size, In.		½"	¾"	1"	1½"	2	2½"	3	3½"	4	5	6	8	10	12	14	16	18	20	24
Maximum Span, Ft.	Water	5	6	7	9	10	11	12	13	14	16	17	19	22	23	25	27	28	30	32
	Air & Steam	-	-	9	11	13	14	15	16	17	19	21	24	28	30	32	35	37	39	42



# TERMS & CONDITIONS OF SALE

These terms and conditions of sale supersede all previous listings. No order shall be binding upon us until accepted in writing by an authorized official at our home office. Goods are tendered or delivered and work is undertaken in every case only upon and subject to these terms and conditions. We shall not be liable for any delay or default in performance due to any cause arising or attributable to any event or omission beyond our reasonable control. All prices herein are suggested prices.

## **PRICES:**

All prices are based on our standard packing and subject to change without notice.

## **TERMS:**

Invoices are due and payable on net 30 days basis, unless otherwise agreed to in writing. Failure to make payment when due shall entitle us to suspend further deliveries or to cancel a contract.

## **TAXES:**

Any taxes, where applicable be they Federal, State, or Local are for the account of the buyer, and will be added to invoice.

## **FREIGHT:**

Unless specifically stated in our proposal, all shipments are F.O.B. our dock or point of shipment. Routing will be at our discretion, unless otherwise agreed to in writing.

## **TITLE:**

Complete title to all goods shall pass to the customer upon delivery to the carrier.

## **RISK:**

Loss or damage to the goods shall pass to the customer upon delivery to the carrier.

## **DAMAGE OR LOSS IN TRANSIT:**

Regardless of freight payment, all risk or loss damage in transit shall pass to the purchaser. Although we will assist buyer in making his claims, we assume no liability for subsequent shortage or damage in transit.

## **CANCELLATION:**

An order may only be cancelled upon receipt of written agreement from us. All costs incurred by such cancellation are to be paid by the purchaser.

## **RETURNED MERCHANDISE:**

All materials are carefully inspected before shipment, but it is not always possible to detect imperfections, therefore the only guarantee that is given is to replace such materials as prove to be defective or to allow credit for their return at our option. If materials appear defective, buyer should discontinue their use and notify us immediately so that we can investigate. We will not allow any claim for labor or expense occasioned by the use of defective materials nor be responsible for damages beyond the price of defective materials. Claims for defective materials should be made within 30 days after receipt of materials. We will not accept returns without our written permission.

## **TRANSPORTATION CLAIM:**

The carriers are responsible for materials lost or damaged enroute, consignee (buyer), as required by uniform Bill of Lading must immediately notify the carrier's agent at destination in writing in order to substantiate formal claim, upon presentation by buyer.

## **LIABILITY FOR MISUSE:**

Purchaser agrees to protect, defend, indemnify and hold us harmless from any and all liability or alleged liability and expense, including attorney's fees, arising from personal injuries, including death, or damage to property, caused by reason of the improper and/or negligent installation or use of our products.

## **SPECIFICATIONS:**

Specifications and dimensions are subject to change without notice. We do not warrant the compliance of our products to specifications other than our own.

## **WARRANTY:**

This warranty is directed solely to those buyers purchasing our products for use in the fabrication and/or construction of products for sale to others. Nothing herein shall be construed to extend this warranty to "Consumers". Our products are warranted against defect in manufacturing for a period of one year. This warranty is limited to the replacement of defective parts, or refund of the purchase price at our discretion. This is the buyers sole and exclusive remedy and we shall not be liable for labor charges and/or other damages or expense arising from the use of defective material, for any damage, consequential or otherwise, of any kind.

This is our sole warranty. We make no other warranty of any kind, expressed or implied, and all implied warranties of merchantability and fitness for a particular purpose which exceed our aforesaid obligation are hereby disclaimed by us and excluded from this warranty.

\*On lengths of 36" or longer, 100 pieces or more inquire for quantity discounts. Standard cutting tolerance is plus or minus 1/16". when required to cut from standard stock lengths of 10' or 20' customer will be charged for scrap resulting from cutting. Scrap will only be shipped if requested. Cutting charges will be invoiced as a separate item.



**All our products are  
Union Made.**



# LET US HELP YOU EXPEDITE THE QUOTING PROCESS

Questions to answer to help you to select the right H-Block Rooftop support system for your next project application.

**What is the project name?**

---

**Add a short project description:**

---

**What is the job application?**

---

**Is this a roof or on-ground application?**

---

**What will be supported?**

(i.e. pipe, ductwork, custom)

---

**What type of system interest you?**

(i.e. pipe hanger, pipe roller, bridge series, etc)

---

**How many units will the job require?**

---

**What is the desired spacing per unit?**

---

**What are the load requirements?**

(include the safety loads if applied)

---

**What type of strut material is required?**

---

## CONTINUE ONLY FOR SPECIFIC PIPE SYSTEMS REQUIRED

**What is the pipe size, schedule?**

---

**Is it water or gas filled?**

---

**What is the pipe hanger unit spacing?**

---

**How much adjustment for pipe height?**

---

**Height from top of roof to top of pipe?**

---

**Height from top of roof to center of pipe?**

---

**Type of material & finish for strut & fittings?**

---

**Length of the top beam on pipe support?**

---

**What is center distance between pipes?**

---

**What is the max roof penetration PSI?**

---

**What are the envelope limitations**

---

**Add a short project description:**

---

**TO BETTER QUOTE A PROJECT, PLEASE PROVIDE US ANY PRINTS YOU MAY HAVE AVAILABLE FOR US TO REVIEW.**

## **HAVE QUESTIONS? PLEASE CONTACT US**

**1-800-242-9366**

**contactus@haydoncorp.com**

**www.haydoncorp.com**

## **LOCATIONS:**

**Headquarters & Plant  
415 Hamburg Turnpike  
Wayne, NJ 07470**

**Texas Plant  
1139 West Carrier Parkway  
Grand Prairie, TX 75050**

**California Plant  
1627 Army Court  
Stockton, CA 95206**



## **OUR VALUES**

**We...**  
**Stay Safe.**  
**Excel.**  
**Deliver.**  
**Grow.**  
***Together.***



1-800-242-9366    [HAYDONCORP.COM](http://HAYDONCORP.COM)  
Wayne, NJ • Grand Prairie, TX • Stockton, CA